

ITENS PARA:

SANDVIK DX CATÁLOGO



SANDVIK DX - CATÁLOGO



PN:045 631 88/04563188
BUCHA

APLICAÇÃO:SANDVIK:DX800-
DX680-DX600



PN:049 076 28/04907628
PINO

APLICAÇÃO:SANDVIK:TAMROCK
CK,DX800,DX700



PN:052 317 48/05231748
MANDÍBULA

APLICAÇÃO:SANDVIK:
TAMROCK, DX800, DX680,
DX700.



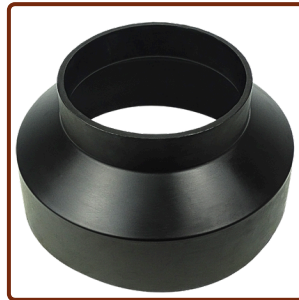
PN:086 158 78/08615878
BUCHA

APLICAÇÃO:SANDVIK: TAMROCK,
DX800.



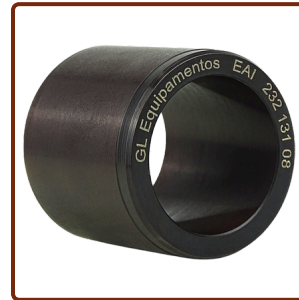
PN:132 430 58/13243058
BUCHA

APLICAÇÃO:SANDVIK: DX800,
TAMROCK.



PN:134 887 18/13488718
GUARDA PÓ

APLICAÇÃO:SANDVIK: DP1500i, DX600,
DX680, DX700, DX800, TAMROCK.



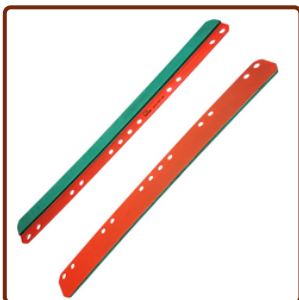
PN:232 131 08/23213108
BUCHA

APLICAÇÃO:SANDVIK:DX800



PN:235 056 68/23505668
PINO

APLICAÇÃO:SANDVIK:DX680,
DX700, DX800.



PN:235 081 58/23508158
CALÇO

APLICAÇÃO:SANDVIK: DX600,
DX680, DX700, DX800.



PN:236 176 17/236 176 18
MANDÍBULA

APLICAÇÃO:SANDVIK: DP1500i,
DX680, DX700 DX800, TAMROCK.



PN:803 223 69/80322369
LINK

APLICAÇÃO:SANDVIK:DX70
0, DX800



PN:550 191 26/55019126
EIXO

APLICAÇÃO:SANDVIK:DP1500i,
DX800, DX680, DX700.



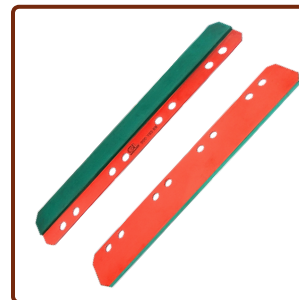
PN:550 027 12/55002712
MANDÍBULA

APLICAÇÃO:SANDVIK: DX600,
DX680, DX700, DX800.



PN:550 051 26/55005126
FLANGE

APLICAÇÃO:SANDVIK: DX600,
DX680, DX700, DX800.



PN:550 163 99/55016399
CALÇO

APLICAÇÃO:SANDVIK:
DX680,DX700,DX800.



PN:623 924 18/62392418
MANDÍBULA

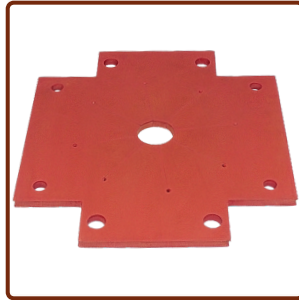
APLICAÇÃO:SANDVIK: TAMROCK,
DL431-7c, DX800, DX700, DX680

SANDVIK DX - CATÁLOGO



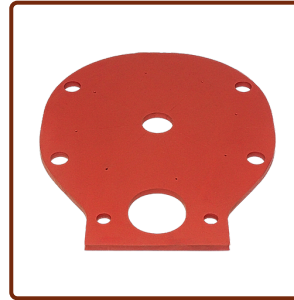
PN:550 191 31/55019131
BUCHA

APLICAÇÃO:SANDVIK: DP1500i,
DX680, DX700, DX800.



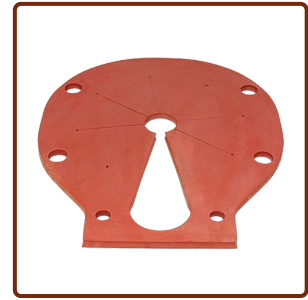
PN:550 407 11/55040711
BORRACHA DO BOCAL

APLICAÇÃO:SANDVIK: DP1500i,
DX680, DX700, DX800.



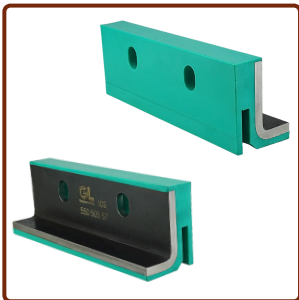
PN:550 643 86/55064386
DEFLETOR

APLICAÇÃO:SANDVIK: DX680,
DX700 DX800.



PN:550 653 65/55065365
DEFLETOR

APLICAÇÃO:SANDVIK: DX680,
DX700, DX800.



PN:550 505 57/55050557
CALÇO

APLICAÇÃO:SANDVIK:DP1500i,
DX680, DX700, DX800.



PN:550 750 67/55075067
MEIA BUCHA

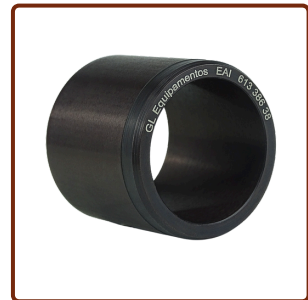
APLICAÇÃO:SANDVIK:DX800



PN:560 182 32/56018232

FILTRO

APLICAÇÃO:BOOMER, SANDVIK,
RANGER.



PN:613 386 38/61338638

BUCHA

APLICAÇÃO:SANDVIK: DX800.



PN:613 389 18/61338918
PINO

APLICAÇÃO:SANDVIK: DX680,
DX700, DX800.



PN:885 746 39/88574639
BUCHA DE BRONZE

APLICAÇÃO:SANDVIK: DX800.



PN:550 129 53/55012953
BUCHA DE BRONZE

APLICAÇÃO:SANDVIK:DX800-DX680-
DX700.



PN:550 129 61/55012961
BUCHA DE BRONZE

APLICAÇÃO:SANDVIK:DX800-DX680-
DX700.



PN:550 422 26/55042226
BUCHA DE BRONZE

APLICAÇÃO:SANDVIK: DX800.



PN:550 160 42/55016042
ARRUELA PLANA

APLICAÇÃO:SANDVIK:DP1500i,DT831-
SC,DT821-SC,DL421-7C,DL431-
7C,DX800,DD321-40C,DT1130-
C,AXERAD06226FOF,DX680,DX700

SANDVIK DX - CATÁLOGO



ARRUELAS

| PN CÓDIGO |
|------------|
| 850 687 49 |
| 851 068 09 |
| 851 281 89 |
| 851 283 39 |
| 851 284 69 |
| 853 239 79 |



NIPLES

| PN CÓDIGO |
|------------|
| 816 700 59 |
| 817 094 69 |
| 817 227 39 |
| 881 142 29 |



PORCAS

| PN CÓDIGO |
|------------|
| 811 260 29 |
| 812 622 69 |
| 806 221 39 |
| 801 775 89 |



CIRCLIPS

| PN CÓDIGO |
|------------|
| 422 120 60 |
| 800 110 19 |

SANDVIK DX - CATÁLOGO



PARAFUSOS



| | | | | | | |
|----------|----------|----------|----------|----------|----------|----------|
| 6535430 | 44253570 | 44276140 | 80046049 | 80438079 | 81840789 | 86602429 |
| 16085730 | 44256750 | 44277690 | 80053209 | 80880229 | 81925789 | |
| 44221850 | 44266520 | 70700648 | 80053739 | 80880359 | 85872009 | |
| 44221980 | 44273520 | 80043839 | 88662319 | 81046109 | 86300769 | |
| 44572670 | 44582160 | 44582720 | 44613750 | 80082429 | | |
| 55026752 | 80019249 | 80019409 | 80019789 | 80091609 | | |
| 80043709 | 80044849 | 80046609 | 80052729 | 80109359 | | |
| 80052859 | 80053179 | 80053609 | 80082309 | 80174559 | | |

SANDVIK DX - CATÁLOGO

LISTA GERAL

| PN CÓDIGO | DESCRIÇÃO | EQUIPAMENTOS DE APLICAÇÃO |
|-----------|--------------------|--|
| 4563188 | BUCHA | SANDVIK:DX800-DX680-DX600 |
| 4907628 | PINO | SANDVIK:TAMROCK,DX800,DX700 |
| 5231748 | MANDÍBULA | SANDVIK:TAMROCK,DX800,DX680,DX700 |
| 5231878 | MANDÍBULA | SANDVIK:TAMROCK,DX800,DX680,DX700 |
| 6535430 | PARAFUSO ALLEN | SANDVIK:DX800,DX680,DX700 |
| 8554868 | PINO | SANDVIK:SandvikDX800-DX680-DX700-DX600 |
| 8615878 | BUCHA | SANDVIK:TAMROCK,DX800 |
| 13243058 | BUCHA | SANDVIK:DX800,TAMROCK |
| 13488718 | GUARDA PÓ | SANDVIK:DP1500i,DP1500i,DX800,DX700,TAMROCK,DX680 |
| 13823188 | PLACA | SANDVIK:SandvikDX800-DX680-DX700-DX600 |
| 16085730 | PARAFUSO SEXTAVADO | SANDVIK:DP1500i,DX680,DX700 |
| 23213108 | BUCHA | SANDVIK:DX800 |
| 23474078 | CALÇO | SANDVIK:DX680,DX700,DX800 |
| 23475238 | CALÇO | SANDVIK:DX680,DX700,DX800 |
| 23497468 | EIXO | SandvikDX800-DX680-DX700-DX600 |
| 23501478 | CALÇO | SANDVIK:DX680,DX700,DX800 |
| 23501508 | CALÇO | DX800,DX700 |
| 23505408 | BRAÇO | SANDVIK:SandvikDX800-DX680-DX700-DX600 |
| 23505668 | PINO | SANDVIK:DX680,DX700,DX800 |
| 23505818 | MONTAGEM | SANDVIK:SandvikDX800-DX680-DX700-DX600 |
| 23508158 | CALÇO GUIA | SANDVIK:DX800,DX700 |
| 23508308 | CALÇO | SANDVIK:DX680,DX700,DX800 |
| 23617617 | MANDÍBULA | SANDVIK:DP1500i,DX800,DX680,DX700,TAMROCK |
| 23617618 | MANDÍBULA | SANDVIK:DP1500i,DX800,DX680,DX700,TAMROCK |
| 26438771 | EIXO EXPANSIVO | SANDVIK:SandvikDT831-SC-DX800-DX700-HL560,SandvikDD321-40CHLX5 |

SANDVIK DX - CATÁLOGO

LISTA GERAL

| PN CÓDIGO | DESCRIÇÃO | EQUIPAMENTOS DE APLICAÇÃO |
|-----------|-------------------------------|--|
| 80174559 | PARAFUSO SEXTAVADO | SANDVIK:DP1500i,DT831-SC,DT821-SC,DL421-7C,DX800,DD321-40C,DT1130-SC,DD320-26X,DX680,DX700,TAMROCKHLX5 |
| 80177589 | PORCA TRAVA | SANDVIK:DP1500i,DT831-SC,DT821-SC,DL421-7C,DX800,DD321-40C,DT1130-SC,DD320-26X,DX680,DX700,TAMROCK |
| 80322369 | LINK DA CORRENTE | DX700 |
| 80438079 | PARAFUSOSEXTAVADO | SANDVIK:DP1500i,DT831-SC,DT821-SC,DL421-7C,DX800,DD321-40C,DT1130-SC,DD320-26X,DX680,DX700,TAMROCK |
| 80880229 | PARAFUSO SEXTAVADO | SANDVIK:DP1500i,DT831-SC,DT821-SC,DL421-7C,DX800,DD321-40C,DT1130-SC,DD320-26X,DX680,DX700,TAMROCK,SandvikDD321-40C |
| 80880359 | PARAFUSO SEXTAVADO | SANDVIK:DP1500i,DT831-SC,DT821-SC,DL421-7C,DX800,DD321-40C,DT1130-SC,DD320-26X,DX680,DX700,TAMROCK,SandvikDD321-40C |
| 81046109 | PARAFUSO | SANDVIK:SandvikDT1130-SC-PANTERADP1500i-DX680,SandvikDD321-40C |
| 81262269 | PORCA TRAVA | SANDVIK:DP1500i,DT831-SC,DT821-SC,DL421-7C,DX800,DD321-40C,DT1130-SC,DD320-26X,DX680,DX700,TAMROCK,SandvikDD321-40C |
| 81438799 | AMORTECEDOR | SANDVIK:DX800-RANGER |
| 81670059 | NIPLE | SANDVIK:PanteraDP1500i;DT831-SC,DT821-SC,DL421-7C,DX800,DD321-40C,DT1130-SC,DD320-26X,DX680,DX700 |
| 81671069 | COTOVELO | SANDVIK:PANTERADP1500i-SandvikDT831-SC-SandvikDL421-7C-DX800-DD320 |
| 81722739 | NIPLE | SANDVIK:PANTERADP1500i-SandvikDL421-7C-SandvikDD321-40C-SandvikDT1130-SC-DX800 |
| 81840789 | PARAFUSO ALLEN | SANDVIK:DP1500i,DX800,DT1130-SC,DD320-26X,DX680,DX700 |
| 81925789 | PARAFUSO SEXTAVADO | SANDVIK:DP1500i,DT831-SC,DT821-SC,DL421-7C,DX800,DD321-40C,DT1130-SC,DD320-26X,DX680,DX700,TAMROCK,SandvikDD321-40C |
| 85068749 | ARRUELA DUPLA | SANDVIK:DP1500i,DT831-SC,DT821-SC,DL421-7C,DL431-7C,DX800,DD321-40C,DT1130-SC,DD320-26X,DX680,DX700,HL600,HL560,HLX5,HL710,DC560 |
| 85106809 | ARRUELA DUPLA | SANDVIK:DP1500i,DT831-SC,DT821-SC,DL421-7C,DL431-7C,DX800,DD321-40C,DT1130-SC,DD320-26X,DX680,DX700,HL600,HL560,HLX5,HL710 |
| 85323979 | ARRUELA DUPLA | SANDVIK:DP1500i,DT831-SC,DT821-SC,DL421-7C,DL431-7C,DX800,DD321-40C,DT1130-C,AXERAD06226FOF,HLX5,DX680,HL650-45,DX700,HL600 |
| 85872009 | PARAFUSO SEXTAVADO | SANDVIK:DP1500i,DT831-SC,DT821-SC,DL421-7C,DX800,DX680,DX700,TAMROCK |
| 86300769 | PARAFUSO ALLEN | SANDVIK:DP1500i,DX800,DX680,DX700,TAMROCK |
| 86602429 | PARAFUSO SEXTAVADO | SANDVIK:DP1500i,DT831-SC,DT821-SC,DL421-7C,DX800,DD321-40C,DT1130-SC,DD320-26X,DX680,DX700,TAMROCK,SandvikDD321-40C |
| 86930549 | KIT VEDAÇÃO | SANDVIK:DP1500i,DT831-SC,DT821-SC,DL421-7C,DL431-7C,DX800,DD321-40C,DT1130-SC,DX680,DX700 |
| 88114229 | NIPLE | SANDVIK:PANTERADP1500i-SandvikDT831-SC-DX800- |
| 88574639 | BUCHA DE BRONZE | SANDVIK:DX800HL800,810,800T |
| 88591409 | VENTILADOR DO AR CONDICIONADO | SANDVIK:DX800HL800,810,800T |
| 88662319 | PARAFUSO ALLEN | SANDVIK:DP1500i,DX800,DX680,DX700,TAMROCK |

SANDVIK DX - CATÁLOGO

LISTA GERAL

| PN CÓDIGO | DESCRIÇÃO | EQUIPAMENTOS DE APLICAÇÃO |
|-----------|-------------------|---|
| 55016401 | CHAPA | SANDVIK:DX680,DX700,DX800 |
| 55019114 | CHAVETA | SANDVIK:DP1500i,DX800,DX680,DX700 |
| 55019117 | ROLAMENTO | SANDVIK:DP1500i,DX800,DX680,DX700 |
| 55019118 | ROLAMENTO | SANDVIK:DP1500i,DX800,DX700 |
| 55019126 | EIXO | SANDVIK:DP1500i,DX800,DX680,DX700 |
| 55019131 | BUCHA | SANDVIK:DP1500i,DX800,DX680,DX700 |
| 55025900 | KIT DE VEDAÇÃO | SANDVIK:DX800,HL800,HL810T |
| 55026014 | BUCHA DE BRONZE | SANDVIK:DX800,HL800,HL810T |
| 55026752 | PARAFUSO | SANDVIK:DX800HL800,810,800T |
| 55029014 | CORRENTE | SANDVIK:DX800HL800,810,800T |
| 55031968 | SUPORTE | SANDVIK:SandvikDX800-DX680-DX700-DX600 |
| 55040479 | QUADRO | SANDVIK:SandvikDX800-DX680-DX700-DX600-PANTERADP1500i |
| 55040481 | CHAPA DE RETENÇÃO | SANDVIK:PANTERADP1500i-DX800 |
| 55040482 | BARRA | SANDVIK:SandvikDX800-DX680-DX700-DX600 |
| 55040690 | PLACA | SANDVIK:SandvikDX800-DX680-DX700-DX600 |
| 55040711 | BORRACHA DO BOCAL | SANDVIK:DP1500i,DX800,DX680,DX700 |
| 55042226 | BUCHA DE BRONZE | SANDVIK:DX800HL800,810,800T |
| 55050557 | CALÇO | SANDVIK:DP1500i,DX800,DX680,DX700 |
| 55055928 | MEIA BUCHA | SANDVIK:DX680,DX700,DX800 |
| 55064386 | DEFLETOR | SANDVIK:DX800-DX680-DX700 |
| 55065365 | DEFLETOR | SANDVIK:DX800-DX680-DX700 |
| 55065504 | CAIXA DE SUCÇÃO | SANDVIK:SandvikDX800-DX680-DX700-DX600-PANTERADP1500i |
| 55075067 | MEIA BUCHA | SANDVIK:DX800 |
| 56018232 | FILTRO DE OLEO | JUMBOSANDVIK,RANGER,DX |
| 61338638 | BUCHA | SANDVIK:DX800 |

SANDVIK DX - CATÁLOGO

LISTA GERAL

| PN CÓDIGO | DESCRIÇÃO | EQUIPAMENTOS DE APLICAÇÃO |
|-----------|--------------------|---|
| 61338918 | PINO | SANDVIK:DX680,DX700,DX800 |
| 62392418 | MORDENTE | DX800,DX700 |
| 70460698 | GUIA | DX800,DX700 |
| 70534342 | PLACA | DX800,DX700 |
| 70700648 | PARAFUSO SEXTAVADO | SANDVIK:DX700HLX5 |
| 80008469 | PINO ELÁSTICO | SANDVIK:DP1500i,DT831-SC,DT821-SC,DX800,DX680,DX700 |
| 80011019 | CIRCLIP | SANDVIK:DX800,SandvikDD321-40CHLX5 |
| 80019249 | PARAFUSO SEXTAVADO | SANDVIK:DP1500i,DT831-SC,DT821-SC,DL421-7C,DX800,DD321-40C,DT1130-SC,DD320-26X,DX680,DX700,TAMROCK,SandvikDD321-40C |
| 80019409 | PARAFUSO | SANDVIK:PANTERADP1500i-SandvikDT831-SC-SandvikDL421-7C-SandvikDL431-7C-SandvikDX800-SandvikDD321-40C-SandvikDT1130-SC-DD320-DX700-DX600-HL560 |
| 80019789 | PARAFUSOS EXTAVADO | SANDVIK:SandvikDL431-7C-SandvikDX800-SandvikDX800-DD320-SandvikDX680-DX600 |
| 80043709 | PARAFUSO SEXTAVADO | SANDVIK:DP1500i,DL421-7C,DL431-7C,DX800,DD321-40C,DT1130-SC,DX680,DX700 |
| 80043839 | PARAFUSO SEXTAVADO | DX700 |
| 80044849 | PARAFUSO | SANDVIK:DP1500i,DT831-SC,DT821-SC,DL421-7C,DX800,DX860,DX700,TAMROCK |
| 80046049 | PARAFUSO SEXTAVADO | SANDVIK:DX700,SandvikDD321-40CHLX5 |
| 80046609 | PARAFUSO SEXTAVADO | SANDVIK:DP1500i,DT831-SC,DT821-SC,DL421-7C,DX800,DD321-40C,DT1130-SC,DD320-26X,DX680,DX700,TAMROCK |
| 80052729 | PARAFUSO SEXTAVADO | SANDVIK:DP1500i,DL431-7C,DX800,DD321-40C,DT1130-SC,DX680,DX700,TAMROCK |
| 80052859 | PARAFUSO SEXTAVADO | SANDVIK:DP1500i,DX800,DT1130-SC,DD320-26X,DX700,TAMROCK |
| 80053179 | PARAFUSO SEXTAVADO | SANDVIK:DP1500i,DT831-SC,DT821-SC,DL421-7C,DX800,DD321-40C,DT1130-SC,DD320-26X,DX680,DX700,TAMROCK,SandvikDD321-40C |
| 80053209 | PARAFUSO SEXTAVADO | SANDVIK:DX700,SandvikDD321-40CHLX5 |
| 80053609 | PARAFUSO SEXTAVADO | SANDVIK:-PANTERADP1500i-DX800-SandvikDD321-40C-SandvikDT1130-SC-DX600-DX700- |
| 80053739 | PARAFUSO SEXTAVADO | SANDVIK:DX700,SandvikDD321-40CHLX5 |
| 80082309 | PARAFUSO SEXTAVADO | SANDVIK:DP1500i,DT831-SC,DT821-SC,DL421-7C,DL431-7C,DX800,DD321-40C,DT1130-SC,DD320-26X,DX680,DX700,TAMROCK,SandvikDD321-40C |
| 80082429 | PARAFUSO SEXTAVADO | SANDVIK:DP1500i,DT831-SC,DT821-SC,DL421-7C,DX800,DD321-40C,DT1130-SC,DD320-26X,DX680,DX700,TAMROCK,SandvikDD321-40CHLX5 |
| 80091609 | PARAFUSO SEXTAVADO | SANDVIK:DP1500i,DT831-SC,DT821-SC,DL421-7C,DX800,DD321-40C,DT1130-SC,DD320-26X,DX680,DX700,TAMROCK,SandvikDD321-40C |
| 80109359 | PARAFUSO SEXTAVADO | SANDVIK:DP1500i,DT831-SC,DT821-SC,DL421-7C,DX800,DD321-40C,DT1130-SC,DD320-26X,DX680,DX700,TAMROCK,SandvikDD321-40C |

SANDVIK DX - CATÁLOGO

LISTA GERAL

| PN CÓDIGO | DESCRIÇÃO | EQUIPAMENTOS DE APLICAÇÃO |
|-----------|--------------------|---|
| 26511761 | PINO EXPANSIVO | SANDVIK:HL560-DX800-SandvikDT831-SC-SandvikDD321-40CHLX5 |
| 42118130 | ARRUELA | SANDVIK:DP1500i,DT831-SC,DT821-SC,DL421-7C,DL431-7C,DX800,DD321-40C,DT1130-SC,DD320-26X,DX680,DX700 |
| 42206630 | ANEL TRAVA | SANDVIK:DP1500i,DT821-SC,DL421-7C,DL431-7C,DX800,DT1130-SC,DX680,DX700 |
| 42212060 | CIRCLIP | SANDVIK:DP1500i,DX800,DX680,DX700 |
| 44221850 | PARAFUSO SEXTAVADO | SANDVIK:DX680,DP1500i,DT831-SC,DT821-SC,DL421-7C,DX800,DD321-40C,DT1130-SC,DD320-26X,DX680,DX700,TAMROCK,SandvikDD321-40CHLX5 |
| 44221980 | PARAFUSO SEXTAVADO | SANDVIK:DX680,DP1500i,DT831-SC,DT821-SC,DL421-7C,DX800,DD321-40C,DT1130-SC,DD320-26X,DX680,DX700,TAMROCK,SandvikDD321-40CHLX5 |
| 44253570 | PARAFUSO SEXTAVADO | SANDVIK:DX680,DP1500i,DT831-SC,DT821-SC,DL421-7C,DX800,DD321-40C,DT1130-SC,DD320-26X,DX680,DX700,TAMROCK |
| 44256750 | PARAFUSO SEXTAVADO | SANDVIK:DX700,SandvikDT831-SC-SandvikDL421-7C-DX800-SandvikDD321-40C-SandvikDT1130-SC-DD320-DX700-DX680 |
| 44266520 | PARAFUSO SEXTAVADO | SANDVIK:DX700,HLX-5-SandvikDT831-SC-SandvikDL421-7C-HL560-DX800-SandvikDD321-40C-SandvikDT1130-SC-DD320HLX5 |
| 44276140 | PARAFUSO SEXTAVADO | SANDVIK:DX700,DP1500i,DT831-SC,DT821-SC,DL421-7C,DX800,DX680,DX700,TAMROCK |
| 44277690 | PARAFUSO SEXTAVADO | SANDVIK:DP1500i,DT831-SC,DT821-SC,DL421-7C,DX800,DD321-40C,DT1130-SC,DD320-26X,DX680,DX700,TAMROCK,SandvikDD321-40CHLX5 |
| 44572670 | PARAFUSO ALLEN | SANDVIK:DP1500i,DT831-SC,DT821-SC,DL421-7C,DL431-7C,DX800,DD321-40C,DT1130-SC,DD320-26X,DX680,DX700,TAMROCK |
| 44582160 | PARAFUSO ALEN | SANDVIK:DP1500i,DT831-SC,DT821-SC,DL421-7C,DL431-7C,DX800,DD321-40C,DT1130-SC,DD320-26X,DX680,DX700,TAMROCK |
| 44582720 | PARAFUSO ALLEN | SANDVIK:PANTERADP1500i-SandvikDL421-7C-SandvikDL431-7C-SandvikDX800-SandvikDD321-40C-SandvikDT1130-SC-DX680-DX700-DX600-HL560HLX5 |
| 44613750 | PARAFUSO | SANDVIK:TAMROCK,PANTERADP1500i,DL421-7C,DX800,DX680,DX700 |
| 55002700 | MANDÍBULA | SANDVIK:SandvikDX800-DX680-DX700-DX600 |
| 55002712 | MANDÍBULA | SANDVIK:SandvikDX800-DX680-DX700-DX600 |
| 55005126 | FLANGE | SANDVIK:SandvikDX800-DX680-DX700-DX600 |
| 55005235 | BRAÇO | SANDVIK:SandvikDX800-DX680-DX700-DX600 |
| 55005335 | ANEL | SANDVIK:SandvikDX800-DX680-DX700-DX600 |
| 55007231 | MANGOTE | SANDVIK:SandvikDX800-DX680-DX700 |
| 55012953 | BUCHA DE BRONZE | SANDVIK:DX800HL800,810,800T,DX800-DX680-DX700 |
| 55012961 | BUCHA DE BRONZE | SANDVIK:DX800HL800,810,800T,DX800-DX680-DX700 |
| 55016042 | ARRUELA DUPLA | SANDVIK:DP1500i,DT831-SC,DT821-SC,DL421-7C,DL431-7C,DX800,DD321-40C,DT1130-C,AXERAD06226FOF,HLX5,DX680,HL650-45,DX700,HL600 |
| 55016399 | CALÇO | SANDVIK:DX680,DX700,DX800 |

OUTRAS FROTAS E EQUIPAMENTOS COM PEÇAS EM NOSSO PORTFÓLIO:



COPS ATLASCOPCO/EPIROC: COP 1240, COP 1640, COP 1838, COP 1840, COP 2160, COP 2560, COP 3060, COP MD20, COP 1638

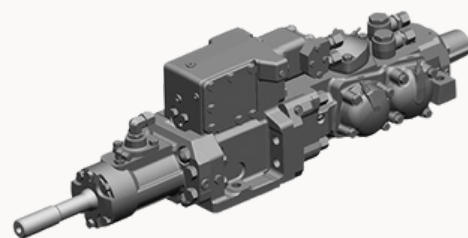
ROC'S ATLASCOPCO/EPIROC: ROC D3, D5, ROC, D60, ROC D65, ROC D7, ROC D7-11, ROC D9-11, ROC F6, ROC F9, ROC F9-F11, ROC L8, ROC T35, ROC T40, ROC T45



JUMBO ATLASCOPCO/EPIROC:

BOLTEC, JUMBO 281, JUMBO 282, JUMBO DD320, JUMBO L2C, JUMBO M2C, JUMBO S1D, JUMBO S1D, JUMBO S1D-DH, JUMBO S2, JUMBO XL3C, JUMBO AXERA 06

HL'S SANDVIK: HL1560-T, HL 800T, HL 810, HL 800, HLX5, SIMBA H-1254



SIMBA ATLASCOPCO/EPIROC: SIMBA H-1254, SIMBA H-1354, SIMBA H-1257, SIMBA H-157, SIMBA M6C, SIMBA M7, SIMBA S7D, ST1030, ST2C, ST2G, ST7

PERFURATRIZES SANDVIK: PANTERA DP1500I, FANDRIL DL321-7C, LEOPARD DI650I, DS310, DT1130-SC, DT11SC, DT821-SC, DT831-SC, DX600, DX680, DX700, DX800.

