

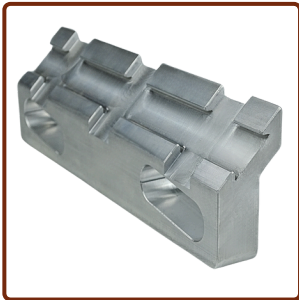
ITENS PARA:

# JUMBO M2C

# CATÁLOGO



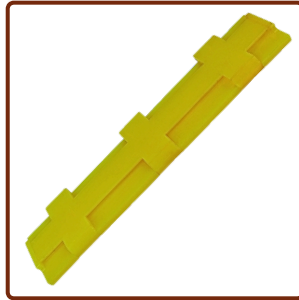
# JUMBO M2C - CATÁLOGO



PN:3128 3249 19/3128324919

**CALÇO**

APLICAÇÃO:BOOMER M2C.



PN:3128 3246 24/3128324624

**CALÇO**

APLICAÇÃO:BOOMER M2C.



PN:3125 2179 00/3125217900  
PN:3125 4937 00/3125493700  
PN:3125 4969 00/3125496900

**TAMPA**

APLICAÇÃO:BOOMER M2C,  
E2C, 281, 282, S1D, SIMBA M7C.



PN:3128 3077 19/3128307719  
PN:3216 0295 44/3216029544  
PN:3216 0295 46/3216029546

**ARGOLA**

APLICAÇÃO:BOOMER M2C,  
E2C, S1D, 281, 282, SIMBA M7C.



PN:3125 0634 00/3125063400

**ANCORADOR**

APLICAÇÃO:BOOMER M2C,  
282.



PN:0500 4520 07/0500452007

**BUCHA DE LUBRIFICAÇÃO**

APLICAÇÃO:BOOMER  
M2C, SIMBA M7C.



PN:3128 0021 18/3128002118

**MEIO SUPORTE**

APLICAÇÃO:BOOMER M2C.



PN:3128 0021 19/3128002119

**SUPORTE**

APLICAÇÃO:BOOMER M2C.



PN:3128 3243 07/3128324307

**PINO GUIA MARTELO**

APLICAÇÃO:BOOMER M2C.



PN:0113 3238 00/0113323800

**PINO**

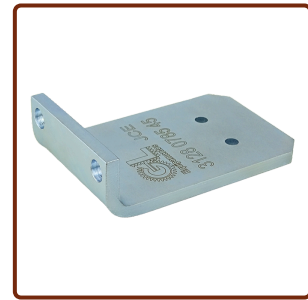
APLICAÇÃO:BOOMER M2C,  
E2C, ROC D5, T35, T40.



PN:3128 0004 22/3128000422  
PN:3128 0048 42/3128004842

**TAMPA DO CARRETEL**

APLICAÇÃO:BOOMER M2C.



PN:3128 0785 45/3128078545

**CHAPA**

APLICAÇÃO:BOOMER M2C,  
ROC D5, T35, T40.



PN:3176 5677 00/3176567700

**MANGUEIRA**

APLICAÇÃO:BOOMER M2C, E2C,  
281, 282, SIMBA M7C, ROC D60,  
D65, L830LF, COP2560.



PN:3128 3150 26/3128315026

**CABO DE RETORNO**

APLICAÇÃO:BOOMER M2C.



PN:3128 0784 10/3128078410

**CABO DE AVANÇO**

APLICAÇÃO:BOOMER M2C.

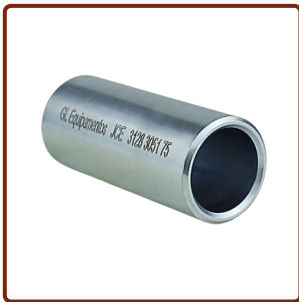


PN:3176 3060 00/3176306000

**NIPLE**

APLICAÇÃO:BOOMER M2C, 281, 282,  
SIMBA M7C, ROC T35, T40, D60, D65,  
L830LF.

# JUMBO M2C - CATÁLOGO



PN:3128 3051 75/3128305175

**GUIA**

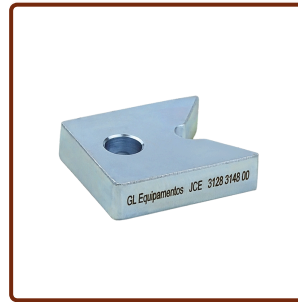
**APLICAÇÃO:BOOMER M2C.**



PN:3128 0481 00/3128048100

**PINO**

**APLICAÇÃO:BOOMER M2C, E2C, S1D, 281, 282, ROC D5, T35, T40.**



PN:3128 3148 00/3128314800

**TRAVANTE**

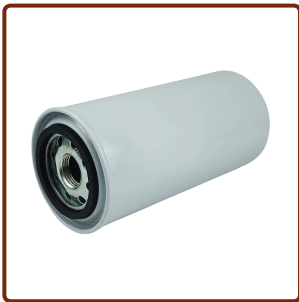
**APLICAÇÃO:BOOMER M2C, S1D, 282.**



PN:3176 3681 00/3176368100

**CINTA**

**APLICAÇÃO:BOOMER M2C, S1D, 281, 282, ROC D5, F6, T35, T40, D60, D65, SIMBA M7C, H1354.**



PN:1202 8040 02/1202804002  
PN:1202 8040 92/1202804092  
PN:3216 9214 00/3216921400  
PN:3216 9214 04/3216921404  
PN:6060 0111 68/6060011168

**FILTRO**

**APLICAÇÃO:BOOMER M2C, 281, ROC D5, T35, T40, D60, SIMBA H1354, M7C.**



PN:8231 0854 19/8231085419  
PN:3222 3456 25/3222345625  
PN:3222 3187 29/3222318729

**FILTRO**

**APLICAÇÃO:BOOMER M2C, E2C, S1D, 281, 282, SIMBA M7C, ROC T35, T40, T50, D65.**



PN:3125 0639 00/3125063900

**AMORTECEDOR**

**APLICAÇÃO:BOOMER M2C, E2C, S1D, 281, 282, ROC D5, T40.**



PN:0108 1415 00/0108141500  
PN:0108 1420 00/0108142000  
PN:0108 3322 00/0108332200

**PINO ELÁSTICO**

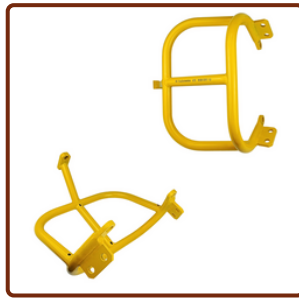
**APLICAÇÃO:BOOMER M2C, 281, 282, S1D CARRGADEIRA ST1030, ROC D5, T35, T40.**



PN:3176 7714 00/3176771400

**BUCHA**

**APLICAÇÃO:BOOMER M2C SIMBA M7C.**



PN:3128 0251 10/3128025110

**PROTETOR**

**APLICAÇÃO:BOOMER M2C, BOOMER 281, 282.**



PN:9128 7344 00/9128734400

**BUCHA**

**APLICAÇÃO:BOOMER M2C, S1D, 281, 282, SIMBA M7C.**



PN:0111 1307 00/0111130700

**CUPILHA**

**APLICAÇÃO:BOOMER M2C, E2C, 282, ROC D5, T35, T40, SIMBA H1354.**



PN:33128 3249 18/3128324918

**CALÇO**

**APLICAÇÃO:BOOMER M2C.**



PN:3128 3256 41/3128325641

**MESA**

**APLICAÇÃO:BOOMER M2C.**



PN:0102 0460 00/0102046000

**PINO**

**APLICAÇÃO:BOOMER M2C, SIMBA M7C, COP 2560, 3060.**

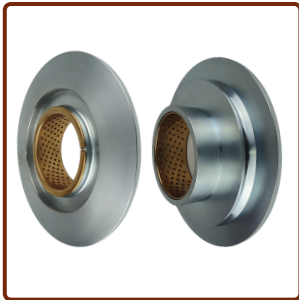


PN:0501 0000 16/0501000016  
PN:0501 0019 00/0501001900

**RÓTULA**

**APLICAÇÃO:BOOMER M2C, S1D, 281, 282, SIMBA M7C, ROC D5, F6, T35, T40, T50, D60, D65.**

# JUMBO M2C - CATÁLOGO



PN:3128 0004 23/3128000423  
POLIA DO CARRETEL  
APLICAÇÃO:BOOMER M2C.



PN:3128 0004 25/3128000425  
CARRETEL  
APLICAÇÃO: BOOMER M2C.



PN:6256 6149 76/6256614976  
PN:6256 6149 79/6256614979  
PN:3128 3074 88/3128307488  
CALÇO DESLIZANTE  
APLICAÇÃO:JUMBO  
M2C,281,282,L1C,L2C,XL3C,S1D,ROC642,T  
30M,T35,T40,D3,D5,D7,D9,D60,D65,L8.



PN:3128 0013 92/3128001392  
SUPORTE  
APLICAÇÃO:BOOMER M2C.



PN:3128 0004 18/3128000418  
PN:3128 0007 22/3128000722  
MESA DE ALUMÍNIO  
APLICAÇÃO:BOOMER M2C.



PN:3128 0784 38/3128078438  
PN:3128 3061 80/3128306180  
SUPORTE

APLICAÇÃO:BOOMER  
M2C,281282,L1C,L2C,XL3C,S1D,ROC  
T30,T35,T40,D3,D7,D9,D60,D65,L8,JS2.



PN:3128 0784 39/3128078439  
PN:3128 3061 81/3128306181  
SUPORTE

APLICAÇÃO:BOOMER  
M2C,281282,L1C,L2C,XL3C,S1D,ROC  
T30,T35,T40,D3,D7,D9,D60,D65,L8,JS2.



PN:3128 0004 19/3128000419  
PLACA  
APLICAÇÃO:BOOMER M2C.

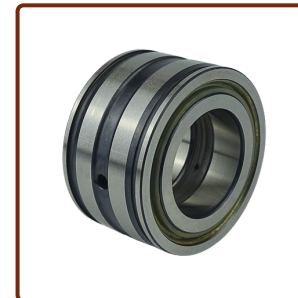


PN:3128 0004 21/3128000421  
GUIA  
APLICAÇÃO:BOOMER M2C.

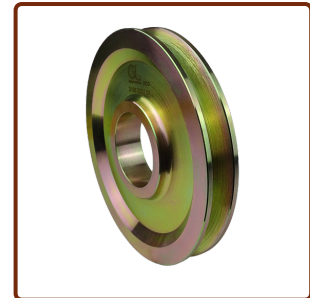


PN:3128 0004 27/3128000427  
PN:3128 0054 49/3128005449

TAMPA  
APLICAÇÃO:BOOMER M2C.

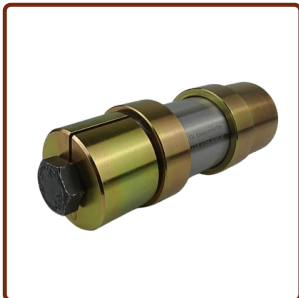


PN:3128 0784 27/3128078427  
ROLAMENTO  
APLICAÇÃO:BOOMER M2C,  
ROCD5,T35,T40.

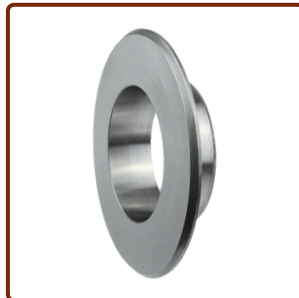


PN:3128 2301 01/3128230101  
PN:3128 0785 34/3128078534  
POLIA

APLICAÇÃO:BOOMER M2C,  
ROCD5,T35,T40.



PN:3125 4937 80/3125493780  
EIXO EXPANSIVO  
APLICAÇÃO:BOOMER M2C,  
282, S1D, H157, 281, 282



PN:3128 3239 11/3128323911  
PN:3128 3239 13/3128323913  
BUCHA

APLICAÇÃO:BOOMER M2C.



PN:3128 3239 06/3128323906  
PN:3128 3239 07/3128323907  
PN:3128 3239 08/3128323908  
PN:3128 3239 09/3128323909  
PN:3128 3239 10/3128323910  
ROLAMENTO  
APLICAÇÃO:BOOMER M2C.



PN:3128 2092 01/3128209201  
TAMPA  
APLICAÇÃO:BOOMER M2C,  
SIMBA M7C.

# JUMBO M2C - CATÁLOGO



PN:0501 0013 00/0501001300

**RÓTULA**

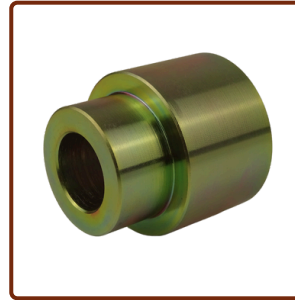
APLICAÇÃO:BOOMER M2C,  
S1D, 281, 282, ROC F6, D60,  
D65, L830LF.



PN:3125 1982 80/3125198280

**EIXO EXPANSIVO**

APLICAÇÃO:BOOMER M2C,  
S1D, L2C, XL3C, 281, 282,  
SIMBA H157, M7C.



PN:3125 4964 00/3125496400

**BUCHA**

APLICAÇÃO:BOOMER M2C,  
281, 282.



PN:3128 0014 70/3128001470

**MESA**

APLICAÇÃO:BOOMER M2C.



PN:3128 3061 83/3128306183  
PN:3128 3061 84/3128306184

**VÁLVULA DE PRESSÃO**

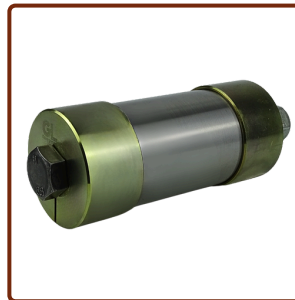
APLICAÇÃO:BOOMER M2C, S1D L2C,  
E2C, XL3C, 281, 282, ROC D5, T40,  
SIMBA H157, H1257.



PN:3128 3239 14/3128323914  
PN:3128 3239 15/3128323915  
PN:3128 3239 16/3128323916

**BUCHA**

APLICAÇÃO:BOOMER M2C.



PN:3125 3071 80/3125307180

**EIXO EXPANSIVO**

APLICAÇÃO:BOOMER M2C,  
L2C, XL3C, SIMBA M7C.



PN:3128 0224 00/3128022400  
PN:3128 0225 00/3128022500

**CASTANHA**

APLICAÇÃO:BOOMER M2C, E2C,  
S1D, 281, 282, ROC D5, F6, T35,  
T40, D60, D65, L830LF, SIMBA  
H1354



PN:3128 0476 00/3128047600

**TRAVA**

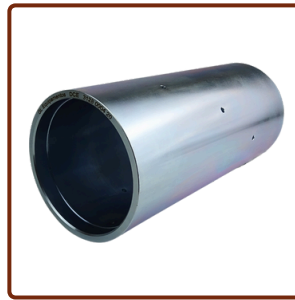
APLICAÇÃO:BOOMER M2C,  
S1D, 281, 282, ROC T35, T40,  
D60, D65.



PN:3128 0619 00/3128061900

**CHAVETA**

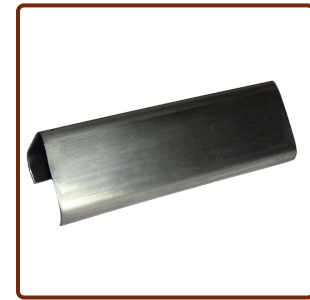
APLICAÇÃO:BOOMER M2C,  
S1D, 281, 282, ROC T35, T40,  
D60, D65.



PN:3128 0004 20/3128000420

**TUBO**

APLICAÇÃO:BOOMER M2C.



PN:3128 0458 02/3128045802

**CALHA**

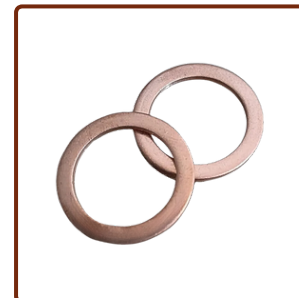
APLICAÇÃO:BOOMER M2C.



PN:3128 3259 57/3128325957

**RASPADOR**

APLICAÇÃO:BOOMER M2C.



PN:0653 1162 00/0653116200

**ARRUELA DE COBRE**

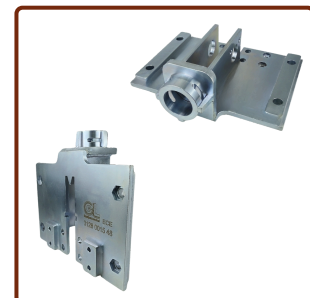
APLICAÇÃO:BOOMER M2C, 281, ROC  
F6, T50, D60, D65, L830LF, SIMBA M7C.



PN:3128 3252 89/3128325289

**GUIA DO CABO**

APLICAÇÃO:BOOMER M2C.



PN:3128 0015 48/3128001548

**MESA DA POLIA**

APLICAÇÃO:BOOMER M2C.

# JUMBO M2C - CATÁLOGO



PN:3128 2093 01/3128209301

VEDAÇÃO

APLICAÇÃO:BOOMER M2C,  
SIMBA M7C.



PN:0102 0410 00/0102041000

PINO

APLICAÇÃO:BOOMER M2C,  
SIMBA M7C.



PN:3128 3239 79/3128323979

CHAVETA

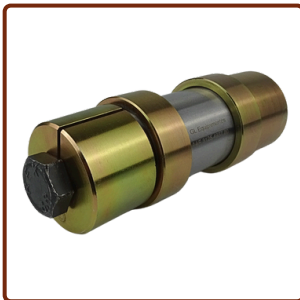
APLICAÇÃO:BOOMER M2C.



PN:3155 2189 01/3155218901

CHAVETA

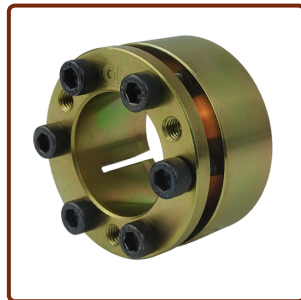
APLICAÇÃO:BOOMER  
M2C, SIMBA M7C.



PN:3125 3071 81/3125307181

EIXO EXPANSIVO

APLICAÇÃO:BOOMER M2C, S1D,  
281, 282, SIMBA H157.



PN:0339 1000 21/0339100021

BUCHA

APLICAÇÃO:BOOMER M2C,  
ROC T35, T40.



PN:3128 0784 09/3128078409

LUVA ESPAÇADORA

APLICAÇÃO:BOOMER M2C, ROC D5,  
ROC T30, T35, T40.



PN:3128 3136 18/3128313618  
PN:3128 0020 89/3128002089  
PN:3128 0020 90/3128002090

BUCHA CENTRALIZADORA

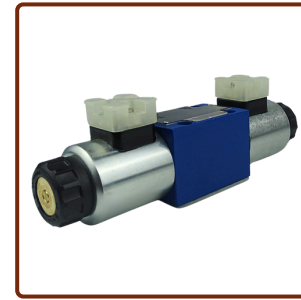
APLICAÇÃO:BOOMER M2C,  
282.



PN:3125 4921 90/3125492190

CHAVETA

APLICAÇÃO:BOOMER M2C,  
SIMBA M7C.



PN:3177 3092 83/3177309283  
PN:3217 3092 43/3217309243  
PN:3217 3092 88/3217309288

VÁLVULA

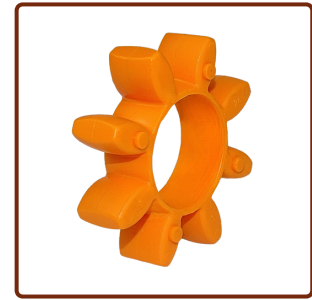
APLICAÇÃO:BOOMER M2C, S1D, E2C,  
XL3C, SIMBA M7C, H1354, ROC L830LF,  
T35, T40, D65.



PN:3215 9908 00/3215990800

MOLA TENSIONADORA

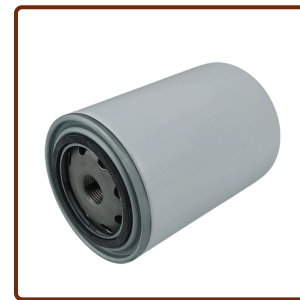
APLICAÇÃO:BOOMER  
M2C, E2C.



PN:9106 2236 01/9106223601

ACOPLAMENTO

APLICAÇÃO:BOOMER M2C,  
E2C, S1D, SIMBA M7C.



PN:6060 0056 92/6060005692

FILTRO

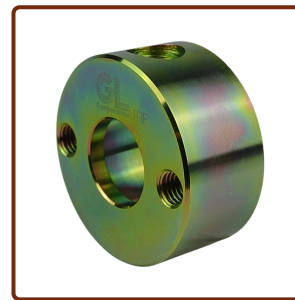
APLICAÇÃO:BOOMER  
M2C.



PN:3128 3063 18/3128306318

ABRAÇADEIRA

APLICAÇÃO:BOOMER M2C,  
281, 282, SIMBA M7C.



PN:3125 4965 00/3125496500

BUCHA

APLICAÇÃO:BOOMER M2C,  
281, 282.



PN:3128 0785 36/3128078536

ARRUELA

APLICAÇÃO:BOOMER M2C,  
E2C, S1D, 281, 282, ROC D5,  
T35, T40.

# JUMBO M2C - CATÁLOGO



PN:3115 1746 05/3115174605  
PN:0686 3716 06/0686371606  
PN:0686 3716 35/0686371635

**PLUG**

**APLICAÇÃO:**BOOMER M2C,  
S1D, 281, 282, ROC F6, D60,  
D65, L830LF.

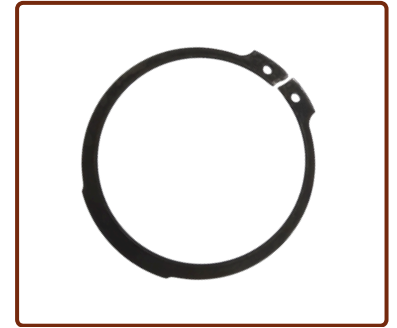
# JUMBO M2C - CATÁLOGO



## PORCAS



## ARRUELAS



## CIRCLIPS

0261 1090 11	0291 1128 13
0261 1099 26	0291 1128 15
0261 2106 00	0291 1128 18
0261 2110 00	0291 1128 20
0261 2111 00	0291 1128 25
0266 2108 00	0291 1128 28
0266 2112 00	0291 1128 30
0266 2114 00	3115 3766 01
0291 1112 00	3128 3245 36
0291 1114 00	

0300 0274 13	0301 2364 00
0300 0274 17	0301 2378 00
0300 0274 35	0301 2394 00
0300 0274 64	0333 2112 00
0300 0275 23	0333 5200 08
0300 0276 67	0333 5200 09
0300 8011 00	0333 5200 10
0300 8019 00	3128 0785 36
0301 2315 00	3128 2800 08
0301 2335 00	3128 3237 45
0301 2344 00	3153 8650 00
0301 2358 00	3315 0195 10

0335 1127 00
0335 2136 00
0335 2141 00
0335 2155 00
0335 1152 00
0335 2165 00
0335 2171 00

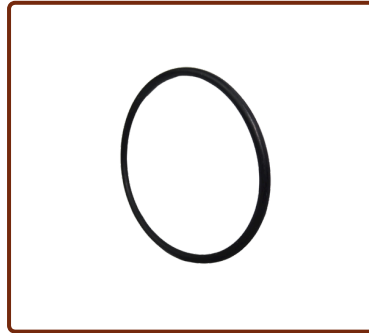


# JUMBO M2C - CATÁLOGO



## HELICOILS

0259 0084 00
0259 0311 00
0259 2009 00
0259 2013 00
0259 2046 00



## O-RINGS

0663 2101 68	0663 3150 00
0663 2135 00	8231 0853 45
0663 6121 00	
0663 6137 00	
0663 6138 00	
0663 6142 00	
0663 6143 00	
0663 2100 61	
0663 2106 58	
0663 2118 01	



## ABRAÇADEIRAS

0347 6100 22
0347 6109 00
0347 6118 00

# JUMBO M2C - CATÁLOGO



## PARAFUSOS



0144 3247 03	0147 1319 03	147136903	0147 1413 03	0147 1495 03	0160 6039 00	0211 1326 03	0211 1963 40
0144 3363 03	0147 1320 03	0147 1375 03	0147 1415 03	0147 1496 03	0160 6042 00	0211 1328 03	0211 1963 54
0144 3365 03	0147 1322 03	0147 1381 03	0147 1417 03	0147 1547 03	0160 6043 00	0211 1360 03	0211 1964 02
0144 3491 00	0147 1323 03	0147 1397 03	0147 1418 03	0147 1557 03	0160 6059 00	0211 1364 03	0211 1965 58
0147 1169 03	0147 1326 03	0147 1398 03	0147 1419 03	0147 1561 03	0192 1359 00	0211 1440 00	0216 1360 00
0147 1171 03	0147 1329 03	0147 1399 03	0147 1421 03	0147 1563 03	0196 1319 00	0211 1957 55	0216 1957 41
0147 1203 03	0147 1330 03	0147 1400 03	0147 1474 03	0147 1571 03	0211 1103 11	0211 1960 83	0216 1957 61
0147 1205 03	0147 1334 03	0147 1403 03	0147 1476 03	0147 1577 03	0211 1173 03	0211 1962 81	0216 1957 86
0147 1208 03	0147 1357 03	0147 1404 03	0147 1477 03	0147 1642 03	0211 1178 03	0211 1962 88	0226 0306 00
0147 1242 03	0147 136 003	0147 1406 03	0147 1479 03	0147 1957 20	0211 1205 03	0211 1962 91	0226 0307 00
0147 1244 03	0147 1362 03	0147 1407 03	0147 1481 03	0147 1957 21	0211 1211 03	0211 1963 09	0226 0326 00
0147 1245 03	0147 1363 03	0147 1408 03	0147 1483 03	0147 1958 29	0211 1215 03	0211 1963 12	0226 0351 01
0147 1246 03	0147 1364 03	0147 1409 03	0147 1484 03	0147 1961 36	0211 1244 03	0211 1963 14	0226 9915 12
0147 1247 03	0147 1365 03	0147 1410 03	0147 1485 03	0147 1961 83	0211 1249 03	0211 1963 23	3115 5166 20
0147 1249 03	0147 1366 03	0147 1411 03	0147 1491 03	0147 1962 64	0211 1250 03	0211 1963 33	3128 3069 54
0147 1250 03	0147 1367 03	0147 1411 12	0147 1493 03	0147 1964 67	0211 1252 03	0211 1963 34	3128 3069 55
0147 1251 03	0147 1368 03	0147 1412 03	0147 1494 03	0160 6036 00	0211 1325 03	0211 1963 36	5750 5317 99

# JUMBO M2C - CATÁLOGO



## LISTA GERAL

PN CÓDIGO	DESCRIÇÃO	EQUIPAMENTOS DE APLICAÇÃO
501001300	RÓTULA	JUMBOM2C
501001900	RÓTULA	JUMBOM2C
544216200	PINO	JUMBOM2C, COPMD20, JUMBO281, ROCT45, CARREGADEIRAST-1030, COP1838, ROCF6, JUMBOS1D, ROCF6, ROCT40, ROCD60, DHR, ROCT35, COP1840, Jumbo282, ROCKD65, COP1240, ROCL8, JUMBO282, ROCF9, ROCD7, JUMBOL1C, COP1640, ROCD3, JUMBO281, CARREGADEIRAST-1030, ROCD7
653116200	ARRUELA DE COBRE	JUMBOM2C
661102000	USIT	JUMBOM2C
661102600	RETENTOR	JUMBOM2C
661103800	ANEL DE USIT	JUMBOM2C
663210061	O-RING	JUMBOM2C
663210168	O-RING	JUMBOM2C
663210658	O-RING	JUMBOM2C
663211801	O-RING	JUMBOM2C
663316308	O-RING	JUMBOM2C
663315000	O-RING	JUMBOM2C
663612100	O-RING	JUMBOM2C
663613800	O-RING	JUMBOM2C
663614200	O-RING	JUMBOM2C
663614300	O-RING	JUMBOM2C
686371606	PLUG	JUMBOM2C, COPMD20
686371635	BUJÃO	JUMBOM2C, COPMD20
686925227	CAP	JUMBOM2C
3115146000	PLUG	JUMBOM2C
3115174605	PLUG	JUMBOM2C
3115174606	PLUG	JUMBOM2C, COP1240, COP1638, COP1640, COP1838, COP1838, COP1838, COP1840, COP1840, COP2160, COP2550, COP2560, COP2560, SIMBAM7C, Jumbo282, Jumbo282
663613700	O-RING	JUMBOM2C
3115182500	PLUG	JUMBOM2C, JUMBOS1D, COP1838, COP1840, JUMBO282, COP1840, COP1640
3115323913	BUCHA	JUMBOM2C
3115323915	BUCHA	JUMBOM2C
3115323916	BUCHA	JUMBOM2C
3115328917	GAXETA	JUMBOM2C

# JUMBO M2C - CATÁLOGO



## LISTA GERAL

PN CÓDIGO	DESCRIÇÃO	EQUIPAMENTOS DE APLICAÇÃO
147141303	PARAFUSO	JUMBOM2C
147141503	PARAFUSOALLEN	JUMBOM2C,SIMBA1257,SIMBA1354,SIMBAM7C,Jumbo281,Jumbo282,Jumbo282,JumboL1C,JumboL2C,JumboXL3C,JumboS1D
147141703	PARAFUSOALLEN	JUMBOM2C,SIMBA157,SIMBAM7C,Jumbo281,Jumbo282,Jumbo282,JumboL2C,JumboXL3C,ROC642,ROCT35,ROCT40,ROCD7,ROCD7,ROCD7,ROCD9,ROCD9,ROCD60,ROCF6,ROCF9
147141803	PARAFUSOALLEN	JUMBOM2C,SIMBA157,SIMBA1257,ROC642,ROCD3,ROCD60,ROCD65,Jumbo281,Jumbo282,Jumbo282,JumboL1C,JumboS1D
147141903	PARAFUSOALLEN	JUMBOM2C,SIMBA1254,SIMBA1257,SIMBA1354,SIMBAM7C,Jumbo281,Jumbo282,Jumbo282,JumboL1C,JumboL2C,JumboXL3C,ROCT35,ROCT40,ROCD7,ROCD7,ROCD7,ROCD9,ROCF9
147142103	PARAFUSOALLEN	JUMBOM2C,ROC642,ROCT35,ROCT40,ROCD3,ROCD7,ROCD7,ROCD7,ROCD9,ROCF6,ROCF9,ROCL8,Jumbo281,Jumbo282,Jumbo282,JumboL1C,JumboL2C,SIMBA1254,SIMBA1257,SIMBAM7C
147147403	PARAFUSOALLEN	JUMBOM2C,SIMBAM6C,JumboXL3C
147147603	PARAFUSOALLEN	JUMBOM2C,SIMBAM7C,Jumbo281,Jumbo282,Jumbo282,JumboL1C,JumboL2C,JumboXL3C
147147703	PARAFUSOALLEN	JUMBOM2C,SIMBA1254,SIMBAM7C,ROCF9
147147903	PARAFUSOALLEN	JUMBOM2C,ROCF6,SIMBAM7C,ROCT45,ROCL8,BOLTEC235
147148103	PARAFUSOALLEN	JUMBOM2C,SIMBA1254,SIMBA1354,SIMBAM6C,SIMBAM7C,ROC642,ROCT35,ROCD60,ROCD65,ROCF6,ROCF9,ROCL8,JumboL2C,JumboXL3C,JumboS1D
147148303	PARAFUSOALLEN	JUMBOM2C,SIMBA1257,SIMBAM7C,Jumbo281,JumboL1C,JumboL2C
147148403	PARAFUSOALLEN	JUMBOM2C,JumboS1D
147148503	PARAFUSOALLEN	JUMBOM2C,SIMBAM7C,JumboL2C,JumboXL3C,JumboS1D
147149103	PARAFUSOALLEN	JUMBOM2C,SIMBA1257,SIMBAM7C,Jumbo281,Jumbo282,JumboL1C,JumboL2C,JumboXL3C,CARREGADEIRAST-1030,CARREGADEIRAST-1030,CARREGADEIRAST-1030,CARREGADEIRAST-1030,CARREGADEIRAST-1030
147149303	PARAFUSOALLEN	JUMBOM2C,SIMBA1354,SIMBAM7C
147149403	PARAFUSO	JUMBOM2C
147149503	PARAFUSO	JUMBOM2C,SIMBAM7C
147149603	PARAFUSOALLEN	JUMBOM2C,SIMBA1257,SIMBAM7C
147154703	PARAFUSOALLEN	JUMBOM2C
147155703	PARAFUSO	JUMBOM2C
147156103	PARAFUSO	JUMBOM2C
147156303	PARAFUSOSEXTAVADO	JUMBOM2C
147157103	PARAFUSOALLEN	JUMBOM2C
147157703	PARAFUSOALLEN	JUMBOM2C
147164203	HELICOIL	JUMBOM2C
147195720	HELICOIL	JUMBOM2C,COP1240,COP1638,COP1640,COP1838,COP1838,COP1838,COP1840,COP1840,COP2550,COP2560,COP2560,SIMBAM7C,Jumbo282,Jumbo282
147195721	HELICOIL	JUMBOM2C
147195829	HELICOIL	JUMBOM2C,D65

# JUMBO M2C - CATÁLOGO



## LISTA GERAL

PN CÓDIGO	DESCRIÇÃO	EQUIPAMENTOS DE APLICAÇÃO
3128306318	SEGURADOR	JUMBOM2C, Jumbo281, Jumbo282, Jumbo282, JumboL1C, JumboL2C, JumboXL3C, SIMBA157, SIMBA1257, SIMBAM6C, SIMBAM7C
3128306954	PARAFUSO	JUMBOM2C, JUMBO281, 282
3128306955	PARAFUSO	JUMBOM2C, JUMBO281, 282
3128307488	CALÇO DESLIZANTE	JUMBOM2C, Jumbo281, Jumbo282, Jumbo282, JumboL1C, JumboL2C, JumboXL3C, JumboS1D, ROC642, T30M, ROCT35, ROCT40, ROCD3, ROCD5, ROCD7, ROCD7, ROCD7, ROCD9, ROCD60, ROCD65, ROCL8
3128307719	ARGOLA	JUMBOM2C
3128309330	CHAPA	JUMBOM2C
3128311448	SUPORTE	JUMBOM2C
3128313618	BUCHA CENTRALIZADORA	JUMBOM2C
3128313618	BUCHA DE BRONZE	JUMBOM2C
3128314800	TRAVANTE DO CALÇO	JUMBOM2C
3128315026	CABO DE RETORNO	JUMBOM2C
3128315039	SUPORTE	JUMBOM2C
3128318768	PINO EXPANSIVO	JUMBOM2C
3128323745	ARRUELA DE AJUSTE	JUMBOM2C
3128323898	CHAPA DE AÇO	JUMBOM2C
3128323901	BUCHA	JUMBOM2C
3128323905	BUCHA	JUMBOM2C
3128323906	EIXO	JUMBOM2C
3128323907	EIXO	JUMBOM2C
3128323908	EIXO	JUMBOM2C
3128323909	EIXO	JUMBOM2C
3128323910	EIXO	JUMBOM2C
3128323911	BUCHA	JUMBOM2C
3128323913	BUCHA	JUMBOM2C
3128323914	ROLAMENTO	JUMBOM2C
3128323915	BUCHA DE BRONZE	JUMBOM2C
3128323916	BUCHA	JUMBOM2C
3128323923	LINK	JUMBOM2C
3128323979	CHAVETA	JUMBOM2C

# JUMBO M2C - CATÁLOGO



## LISTA GERAL

PN CÓDIGO	DESCRIÇÃO	EQUIPAMENTOS DE APLICAÇÃO
147196136	PARAFUSOSEXTAVADO	JUMBOM2C, SIMBAM7C, JumboL2C
147196183	PARAFUSOSEXTAVADO	JUMBOM2C
147196264	PARAFUSOSEXTAVADO	JUMBOM2C, ROCT35, ROCT40, ROCD7, ROCD7, ROCD9, ROCD60, ROCD65, ROCL8, JumboS1D
147196467	PARAFUSOSEXTAVADO	JUMBOM2C
160603600	PARAFUSOSEXTAVADO	JUMBOM2C, SIMBA157, SIMBA1254, SIMBA1257, SIMBAM6C, SIMBAM7C, Jumbo281, Jumbo282, Jumbo282, JumboL1C, JumboL2C, JumboXL3C, JumboS1D
160603900	PARAFUSOFENDA	JUMBOM2C, SIMBA157, SIMBA1254, SIMBA1257, SIMBA1354, SIMBAM6C, SIMBAM7C, Jumbo281, Jumbo282, Jumbo282, JumboL1C, JumboL2C, JumboS1D
160604200	PARAFUSOFENDA	JUMBOM2C, ROCT35, ROCT40, ROCD7, ROCD7, ROCD7, ROCD60, ROCD65, ROCF6, ROCF9, ROCL8, ALF67=80, Jumbo281, Jumbo282, Jumbo282, JumboL1C, JumboL2C, JumboXL3C, SIMBA157, SIMBA1254, SIMBA1257, SIMBA1354, SIMBAM6C, SIMBAM7C
160604300	PARAFUSOFENDA	JUMBOM2C, SIMBA1254, SIMBA1257, SIMBAM7C, CARREGADEIRAST-7
160605900	PARAFUSOFENDA	JUMBOM2C, SIMBA1254, SIMBAM6C, SIMBAM7C, Jumbo282, JumboL1C, JumboL2C, JumboXL3C, JumboS1D, CARREGADEIRAST-7, CARREGADEIRAST-1030, CARREGADEIRAST-1030, CARREGADEIRAST-1030, CARREGADEIRAST-1030, COMPRESSORGA90-160
192135900	PARAFUSOALLEN	JUMBOM2C
196131800	BUJÃO	JUMBOM2C
196131900	PARAFUSOALLEN	JUMBOM2C
211110311	PARAFUSODOJUMBOM2C	JUMBOM2C
211117303	PARAFUSOALLEN	JUMBOM2C, SIMBAM6C, SIMBAM7C, ROCT35, ROCT40, ROCD5, ROCD7, ROCD7, ROCD7, ROCD9, ROCD60, ROCD65, ROCF6, ROCF9, JumboL1C, JumboL2C, JumboXL3C, CARREGADEIRAST-7
211117803	PARAFUSOALLEN	JUMBOM2C, ROCT35, ROCF6, ROCL8
211120503	PARAFUSOALLEN	JUMBOM2C
211121103	PARAFUSOALLEN	JUMBOM2C, SIMBA1354, SIMBAM7C
211121503	PARAFUSOALLEN	JUMBOM2C, SIMBA1354, SIMBAM7C, Jumbo281, Jumbo282, Jumbo282, JumboXL3C
211124403	PARAFUSOALLEN	JUMBOM2C, JumboS1D, SIMBAM7C, ROCD60, ROCD65, ROCL8, CARREGADEIRAST-2G, CARREGADEIRAST-7
211124903	PARAFUSOALLEN	JUMBOM2C, ROCD60, ROCD65, ROCL8, SIMBAM7C
211125003	PARAFUSOALLEN	JUMBOM2C, ROCD60, ROCD65, ROCL8, CARREGADEIRAST-7, CARREGADEIRAST-1030, CARREGADEIRAST-1030, CARREGADEIRAST-1030, CARREGADEIRAST-1030, CARREGADEIRAST-1030, Jumbo282
211125203	PARAFUSOALLEN	JUMBOM2C, Jumbo281, Jumbo282, Jumbo282, JumboS1D, SIMBA157, SIMBA1257, ROCT40, ROCD5, ROCD7, ROCD7, ROCD7, ROCD9, ROCD65, ROCF6, ROCF9, ROCL8
211132503	PARAFUSOALLEN	JUMBOM2C, Jumbo281, Jumbo282, Jumbo282, JumboL1C, JumboL2C, JumboXL3C, JumboS1D, ROCD62, ROCT35, ROCT40, ROCD3, ROCD7, ROCD7, ROCD7, ROCD9, ROCD60, ROCD65, ROCF9, ROCL8, SIMBA1254, SIMBA1354, SIMBAM6C, SIMBAM7C, CARREGADEIRAST-2G, CARREGADEIRAST-7
211132603	PARAFUSOALLEN	JUMBOM2C, Jumbo281, JumboS1D, ROCD7, ROCD60, ROCD65, ROCF6, ROCF9, ROCL8, SIMBAM7C, COMPRESSORGA55-90
211132803	PARAFUSOALLEN	JUMBOM2C, ROCD60, ROCD65, ROCL8, JumboXL3C, COMPRESSORGA55-90
211136003	PARAFUSOALLEN	JUMBOM2C, ROCL8, ROCD65, ROCD60, ROCF6
211136403	PARAFUSOALLEN	JUMBOM2C, JumboL1C, JumboL2C, JumboXL3C, JumboS1D, ROCT35, ROCT40, ROCD7, ROCD7, ROCD9, ROCF6, ROCF9, ROCL8
211144000	PARAFUSOALLEN	JUMBOM2C, SIMBA157, SIMBA1254, SIMBAM7C, ROCT35, ROCT40, ROCD3, ROCD5, ROCD7, ROCD7, ROCD7, ROCD9, JumboL1C, JumboL2C, JumboXL3C
211195755	PARAFUSO	JUMBOM2C

# JUMBO M2C - CATÁLOGO



## LISTA GERAL

PN CÓDIGO	DESCRIÇÃO	EQUIPAMENTOS DE APLICAÇÃO
3128324307	PINO GUIA MARTELO	JUMBOM2C
3128324345	SUPORTE DA MANGUEIRA	JUMBOM2C
3128324536	PORCA	JUMBOM2C
3128324624	CALÇO DESLIZANTE	JUMBOM2C
3128324918	SUPORTE DO CALÇO DESLIZANTE	JUMBOM2C
3128324919	SUPORTE DO CALÇO DESLIZANTE	JUMBOM2C
3128324992	GRAMPO	JUMBOM2C
3128325289	GUIA	JUMBOM2C
3128325641	MESA	JUMBOM2C
3128325957	RASPADOR	JUMBOM2C
3128327030	PROTETOR	JUMBOM2C
3153865000	ARRUELA	JUMBOM2C
3155177280	PINO EXPANSIVO	JUMBOM2C
3155218901	BERÇO	JUMBOM2C
3176306000	NIPLE	JUMBOM2C
3176352380	FILTRO	JUMBOM2C
3176368100	CINTA	JUMBOM2C
3176531300	CAP3/8	JUMBOM2C
3176567700	MANGUEIRA	JUMBOM2C
3177007400	BUCHA	JUMBOM2C,JUMBO281,JUMBOS1D,JUMBO282
3177309283	ELETRO VÁLVULA	JUMBOM2C
3215990800	MOLA TENSIONADORA	JUMBOM2C
3217955415	BOMBA HIDRÁULICA	JUMBOM2C
3217973304	PALHETA	JUMBOM2C
3222118000	FILTRO	JUMBOM2C
3222309750	RÉGUA	JUMBOM2C,JumboL1C,JumboL2C,JumboXL3C,ROC642,ROCT35,ROCT40,ROCD3,ROCD5,ROCD7,ROCD7,ROCD7,ROCD9
3315019510	ARRUELA TRAVA DUPLA	JUMBOM2C,SIMBA157,SIMBA1254,SIMBA1354,SIMBAM7C,COP1838,Jumbo281,Jumbo282,Jumbo282,JumboS1D,ROC642,ROCT35,ROCT40,ROCD3,ROCD5,ROCD7,ROCD7,ROCD7,ROCD9,ROCD60,ROCD65,ROCF6,ROCF9,ROCL8
3715059700	CAP1/2	JUMBOM2C
5112322982	BUCHA	JUMBOM2C
5580014774	KIT DE VEDAÇÃO	JUMBOM2C
5730006982	RETENTOR	JUMBOM2C
5750531799	PARAFUSO	JUMBOM2C
6060005692	FILTRO DE COMBUSTÍVEL	JUMBOM2C
6060011168	FILTRO	JUMBOM2C
8231085345	ANEL	JUMBOM2C
8231085419	FILTRO	JUMBOM2C
9106005811	PALHETA	JUMBOM2C
9106223601	ACOPLAMENTO	JUMBOM2C

# JUMBO M2C - CATÁLOGO



## LISTA GERAL

PN CÓDIGO	DESCRIÇÃO	EQUIPAMENTOS DE APLICAÇÃO
211196083	PARAFUSOALLEN	JUMBOM2C,SIMBA1257,SIMBA1354,SIMBAM7C,Jumbo281,Jumbo282,Jumbo282,JumboL1C,JumboL2C,JumboXL3C,JumboS1D
211196281	PARAFUSOALLEN	JUMBOM2C,SIMBA157,SIMBAM7C,Jumbo281,Jumbo282,Jumbo282,JumboL2C,JumboXL3C,ROCF642,ROCF35,ROCF40,ROCFD7,ROCFD7,ROCFD7,ROCFD9,ROCFD60,ROCF6,ROCF9
211196288	PARAFUSOALLEN	JUMBOM2C,SIMBA157,SIMBA1257,ROCF642,ROCFD3,ROCFD60,ROCFD65,Jumbo281,Jumbo282,Jumbo282,JumboL1C,JumboS1D
211196291	PARAFUSOALLEN	JUMBOM2C,SIMBA1254,SIMBA1257,SIMBA1354,SIMBAM7C,Jumbo281,Jumbo282,Jumbo282,JumboL1C,JumboL2C,JumboXL3C,ROCF35,ROCF40,ROCFD7,ROCFD7,ROCFD7,ROCFD9,ROCF9
211196309	PARAFUSOALLEN	JUMBOM2C,ROCF642,ROCF35,ROCF40,ROCFD3,ROCFD7,ROCFD7,ROCFD7,ROCFD9,ROCF6,ROCF9,ROCF8,Jumbo281,Jumbo282,Jumbo282,JumboL1C,JumboL2C,SIMBA1254,SIMBA1257,SIMBAM7C
211196312	PARAFUSOALLEN	JUMBOM2C,SIMBAM6C,JumboXL3C
211196314	PARAFUSOALLEN	JUMBOM2C,SIMBAM7C,Jumbo281,Jumbo282,Jumbo282,JumboL1C,JumboL2C,JumboXL3C
211196323	PARAFUSOALLEN	JUMBOM2C,SIMBA1254,SIMBAM7C,ROCF9
211196333	PARAFUSOALLEN	JUMBOM2C,ROCF6,SIMBAM7C,ROCF45,ROCF8,BOLTEC235
211196334	PARAFUSOALLEN	JUMBOM2C,SIMBA1254,SIMBA1354,SIMBAM6C,SIMBAM7C,ROCF642,ROCF35,ROCFD60,ROCFD65,ROCF6,ROCF9,ROCF8,JumboL2C,JumboXL3C,JumboS1D
211196336	PARAFUSOALLEN	JUMBOM2C,SIMBA1257,SIMBAM7C,Jumbo281,JumboL1C,JumboL2C
211196340	PARAFUSOALLEN	JUMBOM2C,JumboS1D
211196354	PARAFUSOALLEN	JUMBOM2C,SIMBAM7C,JumboL2C,JumboXL3C,JumboS1D
211196402	PARAFUSOALLEN	JUMBOM2C,SIMBA1257,SIMBAM7C,Jumbo281,Jumbo282,JumboL1C,JumboL2C,JumboXL3C,CARRREGADEIRAST-1030,CARRREGADEIRAST-1030,CARRREGADEIRAST-1030,CARRREGADEIRAST-1030,CARRREGADEIRAST-1030
211196558	PARAFUSOALLEN	JUMBOM2C,SIMBA1354,SIMBAM7C
216136000	PARAFUSO	JUMBOM2C
216195741	PARAFUSO	JUMBOM2C,SIMBAM7C
216195761	PARAFUSOALLEN	JUMBOM2C,SIMBA1257,SIMBAM7C
216195786	PARAFUSOALLEN	JUMBOM2C
226030600	PARAFUSO	JUMBOM2C
226030700	PARAFUSO	JUMBOM2C
226032600	PARAFUSOSEXTAVADO	JUMBOM2C
226035101	PARAFUSOALLEN	JUMBOM2C
226991512	PARAFUSOALLEN	JUMBOM2C
259008400	HELICOIL	JUMBOM2C
259031100	HELICOIL	JUMBOM2C,COP1240,COP1638,COP1640,COP1838,COP1838,COP1838,COP1840,COP1840,COP2550,COP2560,COP2560,SIMBAM7C,Jumbo282,Jumbo282
259200900	HELICOIL	JUMBOM2C
259201300	HELICOIL	JUMBOM2C,D65
259204600	HELICOIL	JUMBOM2C,D65



# JUMBO M2C - CATÁLOGO



## LISTA GERAL

PN CÓDIGO	DESCRIÇÃO	EQUIPAMENTOS DE APLICAÇÃO
3115516620	PARAFUSOALLEN	JUMBOM2C
3115557402	PLACA	JUMBOM2C,COPMD20
3115566100	ANEL	JUMBOM2C,COPMD20
3115580505	PLACA TRASEIRA	JUMBOM2C,COPMD20
3115586000	NOZZLE	JUMBOM2C,COPMD20
3115600243	CAIXA DE VEDAÇÃO	JUMBOM2C
3125063400	ANCORADOR	JUMBOM2C,SIMBA157,SIMBA1257,Jumbo282,JumboL1C
3125063900	AMORTECEDOR	JUMBOM2C,ROC642,ROCT35,ROCT40,ROCD3,ROCD5,ROCD7,ROCD7,ROCD7,ROCD9,Jumbo281,Jumbo282,Jumbo282,JumboL1C,JumboL2C,JumboXL3C,JumboS1D,SIMBA157,SIMBA1257
3125198280	EIXO EXPANSIVO	JUMBOM2C,Jumbo281,Jumbo282,Jumbo282,JumboL1C,JumboL2C,JumboXL3C,JumboS1D,SIMBA157,SIMBAM7C
3125200200	ESPAÇADOR	JUMBOM2C,Jumbo281,Jumbo282,Jumbo282,JumboL1C,JumboL2C,JumboXL3C,JumboS1D,SIMBA157
3125217900	TAMPA	JUMBOM2C,Jumbo281,Jumbo282,Jumbo282,JumboL1C,JumboL2C,JumboXL3C,JumboS1D,SIMBA157,SIMBAM7C
3125307180	EIXO COMPLETO	JUMBOM2C,SIMBAM7C,JumboL2C,JumboXL3C
3125307181	PINO	JUMBOM2C
3125492190	CHAVETA	JUMBOM2C
3125493700	TAMPA	JUMBOM2C,Jumbo281,Jumbo282,Jumbo282,JumboL1C,JumboS1D,SIMBA157
3125493780	EIXO EXPANSIVO	JUMBOM2C,Jumbo281,Jumbo282,Jumbo282,JumboL1C,JumboS1D,SIMBA157
3125496900	TAMPA	JUMBOM2C
3128000418	MESA DE ALUMÍNIO	JUMBOM2C
3128000419	PLACA	JUMBOM2C
3128000420	TUBO	JUMBOM2C
3128000421	GUIA	JUMBOM2C
3128000423	POLIA	JUMBOM2C
3128000425	CARRETEL	JUMBOM2C
3128000427	TAMPA	JUMBOM2C
3128000722	MESA	JUMBOM2C
3128001375	GARFO	JUMBOM2C
3128001392	SUPORTE	JUMBOM2C
3128001470	MESA	JUMBOM2C
3128001548	BERÇO DAS PLACAS	JUMBOM2C

# JUMBO M2C - CATÁLOGO



## LISTA GERAL

PN CÓDIGO	DESCRIÇÃO	EQUIPAMENTOS DE APLICAÇÃO
102041000	PINO	JUMBOM2C
102046000	PINO	JUMBOM2C
108141500	PINO ELÁSTICO	JUMBOM2C
108142000	PINO ELÁSTICO	JUMBOM2C
108 332 200	PINO ELÁSTICO	JUMBOM2C,ROC642,ROCT35,ROCT40,ROCD3,ROCD5,ROCD7,ROCD7,ROCD9,Jumbo281,Jumbo282,JumboL2C,JumboL1C,JumboXL3C,JumboS1D
111130700	CUPILHA	JUMBOM2C,ROC642,ROCT35,ROCT40,ROCD3,ROCD5,ROCD7,ROCD7,ROCD9,Jumbo282,JumboL2C,JumboL1C,JumboXL3C,SONDA252,SIMBA1257,SIMBA1354
113323800	PINO	JUMBOM2C,ROC642,ROCT35,ROCT40,ROCD3,ROCD5,ROCD7,ROCD7,ROCD9,JumboL2C,JumboL1C,JumboXL3C
144324703	PARAFUSOSEXTAVADO	JUMBOM2C
144336303	PARAFUSOSEXTAVADO	JUMBOM2C,Jumbo281,Jumbo282,JumboXL3C,SIMBA1257,SIMBA1354,SIMBAM7C,CARREGADEIRAST-2G,CARREGADEIRAST-1030,CARREGADEIRAST-1030,CARREGADEIRAST-1030,CARREGADEIRAST-1030,CARREGADEIRAST-1030
144336503	PARAFUSOSEXTAVADO	JUMBOM2C,ROCD65,ROCL8,ROCT35,SIMBAM7C,SONDA252,CARREGADEIRAST-1030,CARREGADEIRAST-1030,CARREGADEIRAST-1030,CARREGADEIRAST-1030,CARREGADEIRAST-1030,CARREGADEIRAST-2G,CARREGADEIRAST-7
144349100	PARAFUSOSEXTAVADO	JUMBOM2C,SIMBAM7C
147116903	PARAFUSOSEXTAVADO	JUMBOM2C
147117103	PARAFUSOSEXTAVADO	JUMBOM2C,ROC642,ROCD5,ROCD7,SIMBAM7C,JumboL2C,JumboXL3C
147120303	PARAFUSOSEXTAVADO	JUMBOM2C,JumboXL3C
147120503	PARAFUSOSEXTAVADO	JUMBOM2C,ROC642,ROCD60,ROCF6,Jumbo281,Jumbo282,JumboL2C,JumboL1C,JumboXL3C,SIMBA157,SIMBA1254,SIMBA1257,SIMBA1354,SIMBAM6C,CARREGADEIRAST-7,COMPRESSORXAS420,COMPRESSORGA11-30
147120803	PARAFUSOSEXTAVADO	JUMBOM2C,Jumbo282,JumboS1D,JumboXL3C,SIMBA157,SIMBA1254,SIMBA1354,SIMBAM7C
147124203	PARAFUSOSEXTAVADO	JUMBOM2C,ROC642,ROCD5
147124403	PARAFUSOSEXTAVADO	JUMBOM2C,ROC642,ROCT35,ROCT40,ROCD3,ROCD5,ROCD7,ROCD7,ROCD9,ROCD60,ROCD65,ROCL8,SIMBA157,SIMBA1354,SIMBAM6C,SIMBAM7C,Jumbo282,Jumbo282,JumboL2C,JumboL1C,JumboXL3C,CARREGADEIRAST-1030,CARREGADEIRAST-1030,CARREGADEIRAST-1030,CARREGADEIRAST-1030,CARREGADEIRAST-7,COMPRESSORXAS420,SONDA252,COMPRESSORGA11-30,COMPRESSOR55-90,COMPRESSOR90-160,COMPRESSORRX10
147124503	PARAFUSOSEXTAVADO	JUMBOM2C,ROCT35,ROCT40,CARREGADEIRAST-1030,CARREGADEIRAST-1030,CARREGADEIRAST-1030
147124603	PARAFUSOSEXTAVADO	JUMBOM2C,ROC642,ROCT35,ROCT40,ROCD3,ROCD5,ROCD7,ROCD7,ROCD9,ROCD60,ROCD65,ROCL8,ROCF6,ROCF9,Jumbo281,Jumbo282,Jumbo282,JumboL2C,JumboL1C,JumboXL3C,JumboS1D,SIMBA157,SIMBA1254,SIMBA1257,SIMBA1354,SIMBAM6C,SIMBAM7C,CARREGADEIRAST-2G,CARREGADEIRAST-7,CARREGADEIRAST-1030,CARREGADEIRAST-1030,CARREGADEIRAST-1030,COMPRESSORXAS420,COMPRESSORGA11-30,COMPRESSORRX10
147124703	PARAFUSOSEXTAVADO	JUMBOM2C
147124903	PARAFUSOSEXTAVADO	JUMBOM2C
147125003	PARAFUSOSEXTAVADO	JUMBOM2C,ROCD5,ROCD60,ROCD65,ROCL8,ROCF6,ROCF9,JumboS1D,Jumbo282,JumboL1C,JumboL2C,JumboXL3C,SIMBA157,SIMBAM6C,SIMBAM7C,COMPRESSORLE2-20,COMPRESSORLE15-150,RXR10,COMPRESSORGA90-160,CARREGADEIRAST-2G,CARREGADEIRAST-1030
147125103	PARAFUSOSEXTAVADO	JUMBOM2C,ROC642,ROCT35,ROCT40,ROCD7,ROCD60,ROCD65,ROCL8,ROCF6,Jumbo282,Jumbo282,JumboL1C,JumboL2C,JumboXL3C,CARREGADEIRAST-2G,CARREGADEIRAST-7,CARREGADEIRAST-1030,CARREGADEIRAST-1030,CARREGADEIRAST-1030,CARREGADEIRAST-1030,SIMBA1257,SIMBAM7C
147131903	PARAFUSOSEXTAVADO	JUMBOM2C,ROCT35,ROCT40,ROCD7,ROCD7,ROCD7,ROCD9,ROCF6,ROCF9,ROCL8,Jumbo282,JumboL1C,JumboL2C,JumboXL3C,JumboS1D,SIMBA157,SIMBAM6C,SIMBAM7C,CARREGADEIRAST-1030,CARREGADEIRAST-1030,CARREGADEIRAST-1030,CARREGADEIRAST-1030,CARREGADEIRAST-1030,SONDA252
147132003	PARAFUSOSEXTAVADO	JUMBOM2C
147132203	PARAFUSOSEXTAVADO	JUMBOM2C
147132303	PARAFUSOSEXTAVADO	JUMBOM2C
147132603	PARAFUSOSEXTAVADO	JUMBOM2C

# JUMBO M2C - CATÁLOGO



## LISTA GERAL

PN CÓDIGO	DESCRIÇÃO	EQUIPAMENTOS DE APLICAÇÃO
147132903	PARAFUSOSEXTAVADO	JUMBOM2C
147133003	PARAFUSOSEXTAVADO	JUMBOM2C
147133403	PARAFUSOSEXTAVADO	JUMBOM2C,SIMBA157,ROCD60,ROCF6,ROCF9,COMPRESSORLE2-20,COMPRESSOR15-150,COMPRESSORGA11-30
147135703	PARAFUSOSEXTAVADO	JUMBOM2C,ROC642,ROCD60,ROCD65,ROCL8,SIMBA1254,SIMBA1257,SIMBA1354,CARREGADEIRAST-7,CARREGADEIRAST-1030,CARREGADEIRAST-1030,CARREGADEIRAST-1030,CARREGADEIRAST-1030
147136003	PARAFUSO	JUMBOM2C,ROC642,ROCT35,ROCT40,ROCD3,ROCD5,ROCD7,ROCD7,ROCD7,ROCD9,ROCD60,ROCD65,ROCF6,ROCF9,ROCL8,Jumbo281,Jumbo282,Jumbo282,JumboL1C,JumboL2C,JumboXL3C,JumboS1D,SIMBA157,SIMBA1254,SIMBA1257,SIMBA1354,SIMBAM6C,SIMBAM7C,CARREGADEIRAST-7,CARREGADEIRAST-7,CARREGADEIRAST-1030,CARREGADEIRAST-1030,CARREGADEIRAST-1030,CARREGADEIRAST-1030,COMPRESSORXAS420,SONDA252,COMPRESSORGA55-90,COMPRESSOR90-160,COMPRESSORLE2-20,COMPRESSOR15-150,XXR10
147136203	PARAFUSOSEXTAVADO	JUMBOM2C,ROC642,ROCT35,ROCT40,ROCD3,ROCD5,ROCD7,ROCD7,ROCD7,ROCD9,ROCD60,ROCD65,ROCF6,ROCF9,ROCL8,Jumbo281,Jumbo282,Jumbo282,JumboL1C,JumboL2C,JumboXL3C,JumboS1D,SIMBA157,SIMBA1254,SIMBA1257,SIMBA1354,SIMBAM6C,SIMBAM7C,CARREGADEIRAST-2G,CARREGADEIRAST-7,CARREGADEIRAST-1030,CARREGADEIRAST-1030,CARREGADEIRAST-1030,CARREGADEIRAST-1030,COMPRESSOR2-20,COMPRESSOR15-150,XXR10,COMPRESSORXAS420,SONDA252,COMPRESSORGA11-30,COMPRESSOR55-90,COMPRESSOR90-160
147136303	PARAFUSOSEXTAVADO	JUMBOM2C,COPMD20
147136403	PARAFUSOSEXTAVADO	JUMBOM2C
147136503	PARAFUSOSEXTAVADO	JUMBOM2C
147136603	PARAFUSOSEXTAVADO	JUMBOM2C
147136703	PARAFUSOSEXTAVADO	JUMBOM2C
147136803	PARAFUSOSEXTAVADO	JUMBOM2C
147136903	PARAFUSOSEXTAVADO	JUMBOM2C,ROCT35,ROCT40,ROCD5,ROCD7,ROCD7,ROCD7,ROCD9,ROCD60,ROCD65,ROCL8,SIMBA157,SIMBA1254,SIMBA1257,SIMBAM7C,Jumbo281,JumboL1C,JumboL2C,JumboXL3C,JumboS1D,CARREGADEIRAST-7,CARREGADEIRAST-1030,CARREGADEIRAST-1030,CARREGADEIRAST-1030,COMPRESSORGA90-160
147137503	PARAFUSOSEXTAVADO	JUMBOM2C
147138103	PARAFUSOSEXTAVADO	JUMBOM2C,ROCT35,ROCT40,ROCD7,ROCD7,ROCD7,ROCD9,ROCD60,ROCD65,ROCF9,ROCL8,SIMBA1254,SIMBAM6C,SIMBAM7C,CARREGADEIRAST-1030,CARREGADEIRAST-1030,CARREGADEIRAST-1030,CARREGADEIRAST-1030,CARREGADEIRAST-1030,COMPRESSORXXR10
147139703	PARAFUSOSEXTAVADO	JUMBOM2C,ROCT35,ROCT40,ROCD3,ROCD7,ROCD7,ROCD7,ROCD9,ROCD60,ROCD65,ROCL8,Jumbo281,Jumbo282,Jumbo282,JumboL2C,JumboXL3C,SIMBA1254,SIMBA1257,SIMBA1354,SIMBAM7C
147139803	PARAFUSOSEXTAVADO	JUMBOM2C,ROC642,ROCT35,ROCT40,ROCD3,ROCD5,ROCD7,ROCD7,ROCD7,ROCD9,ROCD60,ROCD65,ROCF6,ROCF9,ROCL8,SIMBA157,SIMBA1254,SIMBA1354,SIMBAM6C,SIMBAM7C,Jumbo282,Jumbo282,JumboL2C,JumboXL3C,JumboS1D,CARREGADEIRAST-7,CARREGADEIRAST-1030,CARREGADEIRAST-1030,CARREGADEIRAST-1030,CARREGADEIRAST-1030,CARREGADEIRAST-1030
147139903	PARAFUSOSEXTAVADO	JUMBOM2C
147140003	PARAFUSOSEXTAVADO	JUMBOM2C
147140303	PARAFUSOSEXTAVADO	JUMBOM2C,ROC642,ROCT35,ROCT40,ROCD3,ROCD5,ROCD7,ROCD7,ROCD7,ROCD9,ROCD60,ROCD65,ROCF6,ROCF9,ROCL8,Jumbo281,Jumbo282,Jumbo282,JumboL1C,JumboL2C,JumboXL3C,JumboS1D,SIMBA157,SIMBA1254,SIMBA1257,SIMBA1354,SIMBAM6C,SIMBAM7C,CARREGADEIRAST-7,CARREGADEIRAST-1030,CARREGADEIRAST-1030,CARREGADEIRAST-1030,COMPRESSORLE2-20,COMPRESSOR15-150,XXR10,COMPRESSORGA90-160
147140403	PARAFUSOSEXTAVADO	JUMBOM2C
147140603	PARAFUSOSEXTAVADO	JUMBOM2C
147140703	PARAFUSOSEXTAVADO	JUMBOM2C
147140803	PARAFUSOSEXTAVADO	JUMBOM2C
147140903	PARAFUSOSEXTAVADO	JUMBOM2C,ROCT35,ROCD3,ROCD5,ROCD7,ROCD7,ROCD7,ROCD60,ROCD65,ROCF6,ROCF9,ROCL8,Jumbo281,Jumbo282,Jumbo282,SIMBA157,SIMBA1354,SIMBAM6C,SIMBAM7C,CARREGADEIRAST-1030,CARREGADEIRAST-1030,CARREGADEIRAST-1030,COMPRESSORGA55-90,COMPRESSORXXR10
147141003	PARAFUSOSEXTAVADO	JUMBOM2C
147141103	PARAFUSOSEXTAVADO	JUMBOM2C
147141112	PARAFUSOSEXTAVADO	JUMBOM2C,ROCT35,ROCD60,ROCD65,ROCF6,ROCL8,SIMBAM7C,Jumbo282
147141203	PARAFUSOSEXTAVADO	JUMBOM2C,ROC642,ROCD3,ROCD5,ROCF9,JumboL2C,JumboXL3C

# JUMBO M2C - CATÁLOGO



## LISTA GERAL

PN CÓDIGO	DESCRIÇÃO	EQUIPAMENTOS DE APLICAÇÃO
226030700	PARAFUSO	JUMBOM2C
226032600	PARAFUSOSEXTAVADO	JUMBOM2C
226035101	PARAFUSOALLEN	JUMBOM2C
226991512	PARAFUSOALLEN	JUMBOM2C
259008400	HELICOIL	JUMBOM2C
259031100	HELICOIL	JUMBOM2C,COP1240,COP1638,COP1640,COP1838,COP1838,COP1838,COP1840,COP1840,COP2550,COP2560,COP2560,SIMBAM7C,Jumbo282,Jumbo282
259200900	HELICOIL	JUMBOM2C
259201300	HELICOIL	JUMBOM2C,D65
259204600	HELICOIL	JUMBOM2C,D65
261109011	PORCA	JUMBOM2C,SIMBAM6C,SIMBAM7C,JumboL1C,JumboL2C,JumboXL3C
261109926	PORCA	JUMBOM2C
261210600	PORCA	JUMBOM2C,SIMBA1254,SIMBA1354,JumboL1C,JumboL2C,JumboXL3C
261211000	PORCA	JUMBOM2C,ROC642,ROCT35,ROCT40,ROCD5,ROCD7,ROCD7,ROCD7,ROCD9,ROCD9,ROCD60,ROCF9,ROCL8,Jumbo281,Jumbo282,Jumbo282,JumboL1C,JumboL2C,JumboXL3C,SIMBA157,SIMBA1257,SIMBAM6C
261211100	PORCA	JUMBOM2C
266210800	PORCA	JUMBOM2C,SIMBA157,SIMBA1254,SIMBA1257,SIMBA1354,SIMBAM6C,SIMBAM7C,Jumbo281,Jumbo282,Jumbo282,JumboL1C,JumboL2C,JumboXL3C,ROC642,ROCD3,ROCD5,ROCD7,ROCD7,ROCD9,ROCD65,ROCF6,ROCF9,ROCL8,COMPRESSORLE2-20,COMPRESSOR15-150,XRX10,COMPRESSORXAS420,COMPRESSORGA11-30,COMPRESSOR55-90
266211200	PORCATRAVA	JUMBOM2C,Jumbo282,Jumbo282,JumboL1C,JumboL2C,JumboXL3C,ROC642,ROCD3,ROCD60,ROCD65,ROCF6,ROCL8,SIMBA1257,SIMBAM6C,SIMBAM7C,COMPRESSORLE2-20,COMPRESSOR15-150,XRX10,SONDA252,COMPRESSORGA11-30,COMPRESSOR55-90,COMPRESSOR90-160
266211400	PORCA	SIMBA157,SIMBA1254,SIMBA1257,SIMBA1354,SIMBAM6C,SIMBAM7C,Jumbo281,Jumbo282,Jumbo282,JumboL1C,JumboL2C,JumboXL3C,JumboS1D,ROC642,ROCT40,ROCD7,ROCD60,ROCD65,ROCF6,ROCF9,ROCL8,COP1638,COP1838,COP1838,COP1840,COP2550,CARREGADEIRAST-7,COMPRESSORGA90-160,JUMBOS2,JUMBOM2C
291111200	PORCA TRAVA	JUMBOM2C
291111400	PORCA TRAVA	JUMBOM2C,CARREGADEIRAST-1030,CARREGADEIRAST-1030,CARREGADEIRAST-1030,CARREGADEIRAST-1030,CARREGADEIRAST-1030,JumboXL3C,SIMBAM7C,ROCD60,COMPRESSORXAS420,SONDA252,COMPRESSORGA90-160
291112813	PORCA TRAVA	SIMBA157,SIMBA1254,SIMBA1257,SIMBA1354,SIMBAM6C,SIMBAM7C,ROC642,ROCT35,ROCT40,ROCD3,ROCD5,ROCD7,ROCD60,ROCD65,ROCF6,ROCF9,ROCL8,Jumbo281,Jumbo282,Jumbo282,JumboL1C,JumboL2C,JumboXL3C,JumboS1D,CARREGADEIRAST-2G,CARREGADEIRAST-7,CARREGADEIRAST-1030,CARREGADEIRAST-1030,CARREGADEIRAST-1030,CARREGADEIRAST-1030,CARREGADEIRAST-1030,JUMBOM2C
291112815	PORCA TRAVA	JUMBOM2C
291112818	PORCA TRAVA	JUMBOM2C
291112820	PORCATRAVA	JUMBOM2C,SIMBA157,SIMBA1254,SIMBA1257,SIMBA1354,SIMBAM6C,SIMBAM7C,Jumbo281,Jumbo282,Jumbo282,JumboL1C,JumboL2C,JumboXL3C,JumboS1D,ROC642,ROCT35,ROCT40,ROCD3,ROCD5,ROCD7,ROCD7,ROCD9,ROCD60,ROCD65,ROCF6,ROCF9,ROCL8,CARREGADEIRAST-2G,CARREGADEIRAST-7,CARREGADEIRAST-1030,CARREGADEIRAST-1030,CARREGADEIRAST-1030,CARREGADEIRAST-1030,CARREGADEIRAST-1030
291112825	PORCA TRAVA	JUMBOM2C,SIMBA157,SIMBA1254,SIMBA1257,SIMBA1354,SIMBAM6C,SIMBAM7C,ALF67=80,ALF72,DHR,DHR,Jumbo281,Jumbo282,Jumbo282,JumboL1C,JumboL2C,JumboXL3C,JumboS1D,ROC642,ROCT35,ROCT40,ROCD3,ROCD5,ROCD7,ROCD7,ROCD9,ROCD9,ROCD60,ROCD65,ROCF6,ROCF9,ROCL8,BBD94W,CARREGADEIRAST-7,CARREGADEIRAST-1030,CARREGADEIRAST-1030,CARREGADEIRAST-1030,CARREGADEIRAST-1030,CARREGADEIRAST-1030
291112828	PORCA TRAVA	JUMBOM2C
291112830	PORCA TRAVA	JUMBOM2C,SIMBA157,SIMBA1257,SIMBA1354,SIMBAM6C,SIMBAM7C,Jumbo281,Jumbo282,Jumbo282,JumboL1C,JumboL2C,JumboXL3C,JumboS1D,ROCT35,ROCT40,ROCD5,ROCD7,ROCD7,ROCD7,ROCD9,ROCD60,ROCD65,ROCL8,CARREGADEIRAST-1030,CARREGADEIRAST-1030,CARREGADEIRAST-1030,CARREGADEIRAST-1030,CARREGADEIRAST-1030
300027413	ARRUELA PLANA	JUMBOM2C,SIMBA157,SIMBA1254,SIMBA1354,SIMBAM6C,SIMBAM7C,ALF71,ROCD60,ROCD65,ROCF6,ROCL8,Jumbo281,JumboL1C,JumboL2C,JumboXL3C,CARREGADEIRAST-7,CARREGADEIRAST-1030,CARREGADEIRAST-1030,CARREGADEIRAST-1030,CARREGADEIRAST-1030,COMPRESSORGA90-160
300027417	ARRUELA PLANA	JUMBOM2C,SIMBAM7C,JumboS1D,CARREGADEIRAST-7,CARREGADEIRAST-1030,CARREGADEIRAST-1030,CARREGADEIRAST-1030,CARREGADEIRAST-1030,CARREGADEIRAST-1030,COMPRESSORGA55-90
300027435	ARRUELA PLANA	JUMBOM2C

# JUMBO M2C - CATÁLOGO



## LISTA GERAL

PN CÓDIGO	DESCRIÇÃO	EQUIPAMENTOS DE APLICAÇÃO
300027464	ARRUELA	JUMBOM2C,SIMBA1354,SIMBAM7C,JumboS1D,ROCD7,ROCD7,ROCD9,ROCD60,ROCD65,ROCL8,CARREGAIDEIRAST-1030
300027523	ARRUELA PLANA	JUMBOM2C
300027667	ARRUELA PLANA	JUMBOM2C
300801100	ARRUELA PLANA	JUMBOM2C
300801900	ARRUELA	JUMBOM2C
301231500	ARRUELA PLANA	JUMBOM2C,SIMBA157,SIMBA1254,SIMBA1257,SIMBA1354,SIMBAM6C,SIMBAM7C,ROC642,ROCT35,ROCT40,ROCD5,ROCD7,ROCD7,ROCD7,ROCD7,ROCD60,ROCD65,ROCF6,ROCL8,Jumbo281,Jumbo282,Jumbo282,JumboL1C,JumboL2C,JumboXL3C,CARREGAIDEIRAST-2G,CARREGAIDEIRAST-7,CARREGAIDEIRAST-1030,CARREGAIDEIRAST-1030,CARREGAIDEIRAST-1030,CARREGAIDEIRAST-1030,ALF67=80,COMPRESSORLE2-20,COMPRESSOR15-150,XRX10,COMPRESSORGA55-90
301233500	ARRUELA PLANA	JUMBOM2C,SIMBA157,SIMBA1254,SIMBA1257,SIMBA1354,SIMBAM6C,SIMBAM7C,DHR,DHR,Jumbo281,Jumbo282,Jumbo282,JumboL1C,JumboL2C,JumboXL3C,JumboS1D,ROC642,ROCT35,ROCT40,ROCD3,ROCD5,ROCD7,ROCD7,ROCD7,ROCD9,ROCD60,ROCD65,ROCF6,ROCF9,ROCL8,CARREGAIDEIRAST-2G,CARREGAIDEIRAST-7,CARREGAIDEIRAST-1030,CARREGAIDEIRAST-1030,CARREGAIDEIRAST-1030,CARREGAIDEIRAST-1030,CARREGAIDEIRAST-1030,COMPRESSORLE2-20,COMPRESSOR15-150,XRX10,COMPRESSORXAS420,SONDA252,COMPRESSORGA11-30,COMPRESSOR55-90,COMPRESSOR90-160
301234400	ARRUELA PLANA	JUMBOM2C,SIMBA157,SIMBA1254,SIMBA1257,SIMBA1354,SIMBAM6C,SIMBAM7C,Jumbo281,Jumbo282,Jumbo282,JumboL1C,JumboL2C,JumboXL3C,JumboS1D,ROC642,ROCT35,ROCT40,ROCD3,ROCD5,ROCD7,ROCD7,ROCD7,ROCD9,ROCD60,ROCD65,ROCF6,ROCF9,ROCL8,CARREGAIDEIRAST-2G,CARREGAIDEIRAST-7,CARREGAIDEIRAST-1030,CARREGAIDEIRAST-1030,CARREGAIDEIRAST-1030,CARREGAIDEIRAST-1030,CARREGAIDEIRAST-1030,COMPRESSORLE2-20,COMPRESSOR15-150,XRX10,COMPRESSORXAS420,COMPRESSORGA11-30,COMPRESSOR55-90,COMPRESSOR90-160
301235800	ARRUELA	JUMBOM2C,SIMBA157,SIMBA1254,SIMBA1257,SIMBA1354,SIMBAM6C,SIMBAM7C,Jumbo281,Jumbo282,Jumbo282,JumboL1C,JumboL2C,JumboXL3C,JumboS1D,ROC642,ROCT35,ROCT40,ROCD3,ROCD5,ROCD7,ROCD7,ROCD7,ROCD9,ROCD60,ROCD65,ROCF6,ROCF9,ROCL8,CARREGAIDEIRAST-2G,CARREGAIDEIRAST-7,CARREGAIDEIRAST-1030,CARREGAIDEIRAST-1030,CARREGAIDEIRAST-1030,CARREGAIDEIRAST-1030,CARREGAIDEIRAST-1030,COMPRESSORLE2-20,COMPRESSOR15-150,XRX10,COMPRESSORXAS420,COMPRESSORGA11-30,COMPRESSOR55-90,COMPRESSOR90-160
301236400	ARRUELA PLANA	JUMBOM2C,SIMBA1257,SIMBAM7C,JumboXL3C,JumboS1D,ROCT35,ROCT40,ROCD3,ROCD5,ROCD7,ROCD7,ROCD7,ROCD9,ROCF6,ROCL8
301237800	ARRUELA PLANA	JUMBOM2C,COPMD20
301239400	ARRUELA PLANA	JUMBOM2C
333211200	ARRUELA	JUMBOM2C
333520008	ARRUELA TRAVA	SIMBA157,SIMBA1254,SIMBA1257,SIMBAM6C,Jumbo281,Jumbo282,JumboL1C,JumboL2C,ROC642,ROCT35,ROCT40,ROCD3,ROCD5,ROCD7,ROCD7,ROCD7,ROCD9,ROCD60,ROCD65,ROCF6,ROCF9,ROCL8,JUMBOS2,JUMBOM2C
333520009	ARRUELA DUPLA	JUMBOM2C,FlexiRocD65SF,RocD7,SmartRocT45,
333520010	ARRUELA TRAVA DUPLA	JUMBOM2C,SIMBA157,ROC642,ROCT35,ROCT40,ROCD3,ROCD5,ROCD7,ROCD7,ROCD7,ROCD9,ROCD60,ROCD65,ROCF9,ROCL8
335112700	CIRCLIP	JUMBOM2C
335115200	CIRCLIP	JUMBOM2C,SIMBA1257,JumboL1C,JumboL2C,JumboXL3C,ROC642,ROCT35,ROCT40,ROCD3,ROCD5,ROCD7,ROCD7,ROCD7,ROCD9
335213600	CIRCLIP	JUMBOM2C
335214100	CIRCLIP	JUMBOM2C
335215500	CIRCLIP	JUMBOM2C,SIMBA157,Jumbo281,Jumbo282,Jumbo282,JumboL1C,JumboL2C,JumboXL3C,JumboS1D,ROCF6,ROCF9,ROCL8,SONDA252
335216500	CIRCLIP	JUMBOM2C
335217100	CIRCLIP	JUMBOM2C,SIMBAM7C,ROCT35,ROCT40,ROCD7,ROCD7,ROCD7,ROCD9,ROCD60,ROCD65,ROCF9,ROCL8,JumboL2C,JumboXL3C
339100021	BUCHA	JUMBOM2C,ROCT35,ROCT40,ROCD3,ROCD7,ROCD7,ROCD9,JumboXL3C,SIMBA1257
347610022	ABRAÇADEIRA	SIMBAH1354,BOLTEC,SIMBAS7D,POWERROCT50,SIMBAM6,JUMBOM2C,282,JUMBOM2C
347610900	ABRAÇADEIRA	JUMBOM2C
347611800	ABRAÇADEIRA	JUMBOM2C
500452007	BUCHA DE LUBRIFICAÇÃO	JUMBOM2C
501000016	RÓTULA	JUMBOM2C

# JUMBO M2C - CATÁLOGO



## LISTA GERAL

PN CÓDIGO	DESCRIÇÃO	EQUIPAMENTOS DE APLICAÇÃO
3128002089	BUCHA	JUMBOM2C
3128002090	BUCHA	JUMBOM2C
3128002118	MEIO SUPORTE	JUMBOM2C
3128002119	SUPORTE	JUMBOM2C
3128005449	TAMPA	JUMBOM2C
3128022400	PROTETOR DE MANGUEIRA	JUMBOM2C,ROCT35,ROCT40,ROCD5,ROCD7,ROCD7,ROCD7,ROCD9,ROCD60,ROCD65,ROCF6,ROCF9,ROCL8,Jumbo281,Jumbo282,Jumbo282,JumboL1C,JumboL2C,JumboXL3C,JumboS1D,SIMBA157,SIMBA1254,SIMBA1354,SIMBAM7C
3128022500	PROTETOR DE MANGUEIRA	JUMBOM2C,ROCT35,ROCT40,ROCD5,ROCD7,ROCD7,ROCD7,ROCD9,ROCD60,ROCD65,ROCF6,ROCF9,ROCL8,SIMBA157,SIMBA1254,SIMBA1354,SIMBAM6C,JumboL1C,JumboL2C
3128025110	PROTETOR	JUMBOM2C,Jumbo281,Jumbo282,Jumbo282,JumboL1C
3128045802	CALHA6,5	JUMBOM2C,JumboL1C
3128047600	TRAVA	JUMBOM2C,Jumbo281,Jumbo282,Jumbo282,JumboL1C,JumboL2C,JumboXL3C,JumboS1D,SIMBA157,SIMBA1257,ROC642,ROCT35,ROCT40,ROCD3,ROCD5,ROCD7,ROCD7,ROCD7,ROCD9,ROCD60
3128048100	PINO	JUMBOM2C,Jumbo281,Jumbo282,Jumbo282,JumboL1C,JumboL2C,JumboXL3C,JumboS1D,SIMBA157,SIMBA1257,ROC642,ROCT35,ROCT40,ROCD3,ROCD5,ROCD7,ROCD7,ROCD7,ROCD9
3128061900	CHAVETA**(VEROBS)**	JUMBOM2C,Jumbo281,Jumbo282,Jumbo282,JumboL1C,JumboL2C,JumboXL3C,JumboS1D,SIMBA157,SIMBA1257,ROC642,T30M,ROCT35,ROCT40,ROCD3,ROCD5,ROCD7,ROCD7,ROCD7,ROCD9,ROCD60,ROCD65,ROCL8
3128070900	NIPLE	JUMBOM2C
3128078409	LUVA ESPAÇADORA	JUMBOM2C,Jumbo282,JumboL1C,JumboL2C,JumboXL3C,ROC642,T30M,ROCT35,ROCT40,ROCD3,ROCD5,ROCD7,ROCD7,ROCD7,ROCD9,SIMBA1257
3128078410	CABO DE AVANÇO	JUMBOM2C
3128078427	ROLAMENTO	JUMBOM2C
3128078438	CALÇO	Jumbo281,Jumbo282,Jumbo282,JumboL1C,JumboL2C,JumboXL3C,JumboS1D,ROCT30,ROCT35,ROCT40,ROCD3,ROCD7,ROCD7,ROCD7,ROCD9,ROCD60,ROCD65,ROCL8,JUMBOS2,JUMBOM2C
3128078439	SEGURADOR	Jumbo281,Jumbo282,Jumbo282,JumboL1C,JumboL2C,JumboXL3C,JumboS1D,ROCT30,ROCT35,ROCT40,ROCD3,ROCD7,ROCD7,ROCD7,ROCD9,ROCD60,ROCD65,ROCL8,JUMBOS2,JUMBOM2C
3128078534	POLIA	JUMBOM2C,JumboL1C,JumboL2C,JumboXL3C,ROC642,ROCT35,ROCT40,ROCD3,ROCD5,ROCD7,ROCD7,ROCD7,ROCD9
3128078536	ARRUELA	JUMBOM2C,Jumbo281,Jumbo282,Jumbo282,JumboL1C,JumboL2C,JumboXL3C,JumboS1D,SIMBA157,SIMBA1257,ROC642,ROCT35,ROCT40,ROCD3,ROCD5,ROCD7,ROCD7,ROCD7,ROCD9
3128078545	CHAPA	JUMBOM2C
3128082700	PINO DA VÁLVULA	JUMBOM2C
3128209100	CASQUILHO	JUMBOM2C
3128209201	TAMPA	JUMBOM2C
3128209301	VEDAÇÃO DA TAMPA	JUMBOM2C
3128305175	GUIA	JUMBOM2C
3128306180	CALÇO DE ALUMÍNIO	JUMBOM2C,Jumbo281,Jumbo282,Jumbo282,JumboL1C,JumboL2C,JumboXL3C,JumboS1D,ROC642,ROCT35,ROCT40,ROCD5,ROCD7,ROCD7,ROCD7,ROCD9,ROCD3,ROCD60,ROCD65,ROCL8
3128306181	SUPORTE DO CALÇO DESLIZANTE	JUMBOM2C,Jumbo281,Jumbo282,Jumbo282,JumboL1C,JumboL2C,JumboXL3C,JumboS1D,ROC642,ROCT35,ROCT40,ROCD3,ROCD5,ROCD7,ROCD7,ROCD9,ROCD60,ROCD65,ROCL8
3128306183	VÁLVULA DE PRESSÃO	JUMBOM2C,Jumbo281,Jumbo282,Jumbo282,JumboL1C,JumboL2C,JumboXL3C,JumboS1D,SIMBA157,SIMBA1257

# OUTRAS FROTAS E EQUIPAMENTOS COM PEÇAS EM NOSSO PORTFÓLIO:



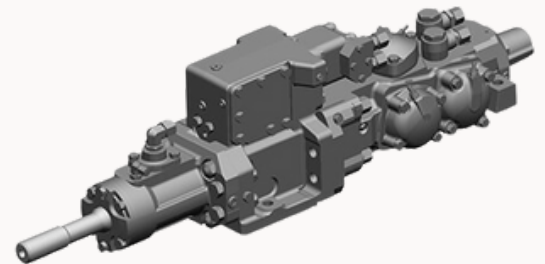
**COPS ATLASCOPCO/EPIROC:** COP 1240,COP 1640,COP 1838,COP 1840,COP 2160,COP 2560,COP 3060,COP MD20,COP 1638

**ROC'S ATLASCOPCO/EPIROC:** ROC D3,D5,ROC, D60,ROC D65,ROC D7,ROC D7-11,ROC D9-11,ROC F6,ROC F9,ROC F9-F11,ROC L8,ROC T35,ROC T40,ROC T45



**JUMBO ATLASCOPCO/EPIROC:** BOLTEC,JUMBO 281,JUMBO 282,JUMBO DD320,JUMBO L2C,JUMBO M2C,JUMBO S1D,JUMBO S1D,JUMBO S1D-DH,JUMBO S2,JUMBO XL3C,JUMBO AXERA 06

**HL'S SANDVIK:** HL 1560-T,HL 800T,HL 810,HL 800,HLX5,SIMBA H-1254



**SIMBA ATLASCOPCO/EPIROC:** SIMBA H-1254,SIMBA H-1354,SIMBA H-1257,SIMBA H-157,SIMBA M6C,SIMBA M7,SIMBA S7D,ST1030,ST2C,ST2G,ST7

**PERFURATRIZES SANDVIK:** PANTERA DP1500I,FANDRIL DL321-7C,LEOPARD DI650I,DS310,DT1130-SC,DT11SC,DT821-SC,DT831-SC,DX600,DX680,DX700,DX800.

